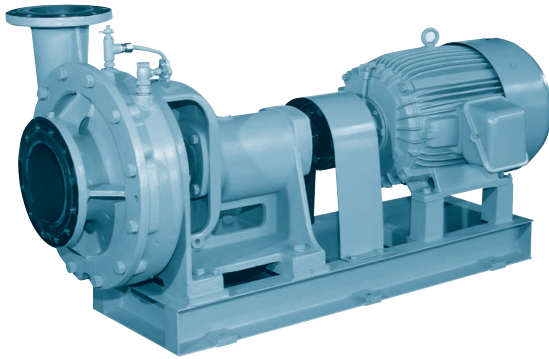


CENTRIFUGAL PUMP

HC



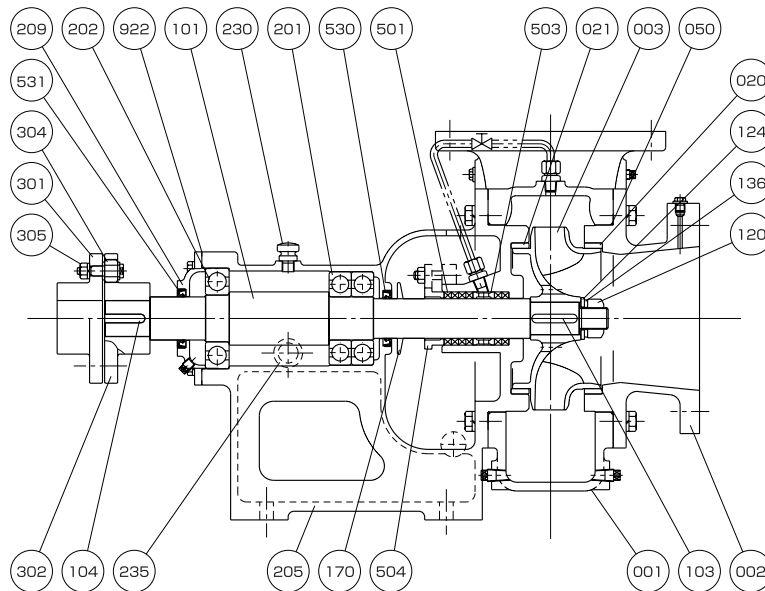
Application

Ballast Pump

Feature

Horizontal Single-stage Single-suction

Structure & Material

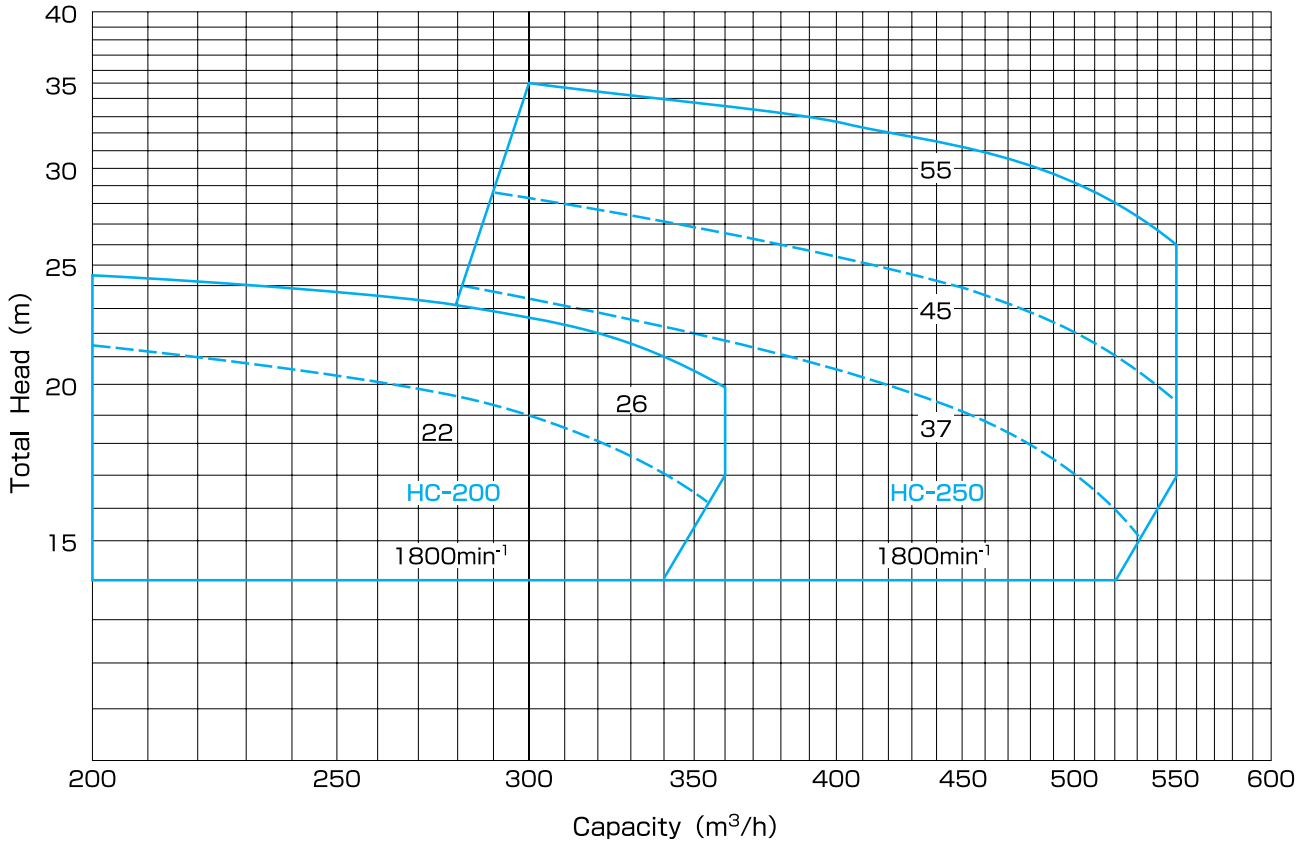


12-1

Part No.	Name	Req. No.	Sea Water		Fresh Water	
			Material	JIS	Material	JIS
001	CASING	1	BRONZE	CAC402	CAST IRON	FC200
002	CASING COVER	1	BRONZE	CAC402	CAST IRON	FC200
003	IMPELLER	1	PHOSPHOR BRONZE	CAC502A	PHOSPHOR BRONZE	CAC502A
020	CASING RING	1	BRONZE	CAC402	BRONZE	CAC402
021	CASING RING	1	BRONZE	CAC402	BRONZE	CAC402
050	O-RING	2	RUBBER	NBR	RUBBER	NBR
101	SHAFT	1	STAINLESS STEEL	SUS304	STAINLESS STEEL	SUS304
103	KEY	1	STAINLESS STEEL	SUS304	STAINLESS STEEL	SUS304
104	KEY	1	CARBON STEEL	S45C	CARBON STEEL	S45C
120	IMPELLER NUT	1	STAINLESS STEEL	SUS304	STAINLESS STEEL	SUS304
124	IMPELLER WASHER	1	STAINLESS STEEL	SUS304	STAINLESS STEEL	SUS304
136	SPRING WASHER	1	STAINLESS STEEL	SUS304	STAINLESS STEEL	SUS304
170	FLINGER	1	RUBBER	NBR	RUBBER	NBR
201	BALL BEARING	2	BEARING STEEL	SUJ2	BEARING STEEL	SUJ2
202	BALL BEARING	1	BEARING STEEL	SUJ2	BEARING STEEL	SUJ2

Part No.	Name	Req. No.	Sea Water		Fresh Water	
			Material	JIS	Material	JIS
205	BEARING HOUSING	1	CAST IRON	FC200	CAST IRON	FC200
209	BEARING COVER	1	CAST IRON	FC200	CAST IRON	FC200
230	OIL PLUG	1	BRASS	C3602	BRASS	C3602
235	OIL LEVEL GAUGE	1	PLASTIC	-	PLASTIC	-
301	COUPLING	1	CAST IRON	FC200	CAST IRON	FC200
302	COUPLING	1	CAST IRON	FC200	CAST IRON	FC200
304	COUPLING RING	8	RUBBER	NBR	RUBBER	NBR
305	COUPLING BOLT & NUT	8	MILD STEEL	SS400	MILD STEEL	SS400
501	GLAND PACKING	6	CARBONIZED FIBER	-	CARBONIZED FIBER	-
503	LANTERN RING	1	BRONZE	CAC402	BRONZE	CAC402
504	GLAND	1	BRONZE	CAC402	BRONZE	CAC402
530	OIL SEAL	1	RUBBER	NBR	RUBBER	NBR
531	OIL SEAL	1	RUBBER	NBR	RUBBER	NBR
922	GASKET	1	PAPER	-	PAPER	-

Performance



Dimension

