

Dear Customer,

ATTENTION WHEN RUNNING PUMPS WITH LOW SULFUR FUEL OIL

Thank you for your patronage so far.

Please note the following information if you use our pump to handle L.S.F.O. (low sulfur fuel oil), which applies with SOx regulation (For 3 Screw pump, 1 Screw pump, and Gear pump).

1. History

Based on MARPOL Annex IV, regulation of SOx emission was enforced on January 1st, 2020. By this regulation, allowable level of sulfur contained in the F.O. is strengthened.

Considering this, use of L.S.F.O. has started to meet the regulation.

2. Things to concern

Typically, L.S.F.O. has a higher pour point compared to existing F.O..

There would be a difficulty of oil transferring expected, such as sudden increase in kinematic viscosity due to insufficient heating, or the clogging of waxing components on filter.

When the F.O. is not transferred to pump, dry-running condition might occur and metals of each parts would contact without forming oil film where it should be formed. When this occurs, parts may be damaged due to seizure.

3. Attention when using F.O. with high pour point

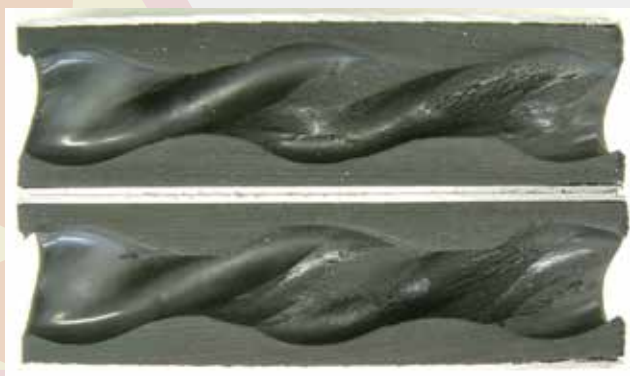
* Heat the storage tank so that the temperature is 10 °C+ higher than the pour point all the time.

* Ensure the F.O. flow to the pump as such by insulation lagging on the storage tank and pipes to pumps.

In case the heating devices are unavailable, please consider the use of additives, which would improve the liquidity.



Example of trouble for 3 screw pump
Damaged rotor



Example of trouble for 1 screw pump
Damaged stator

Contact information: business-marine@taiko-kk.com