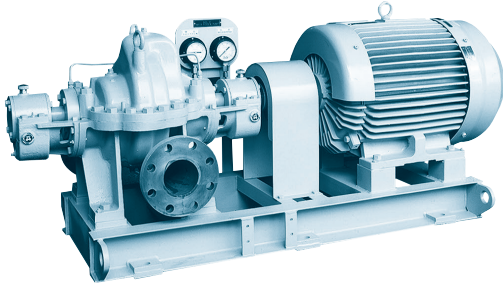


CENTRIFUGAL PUMP

2BF



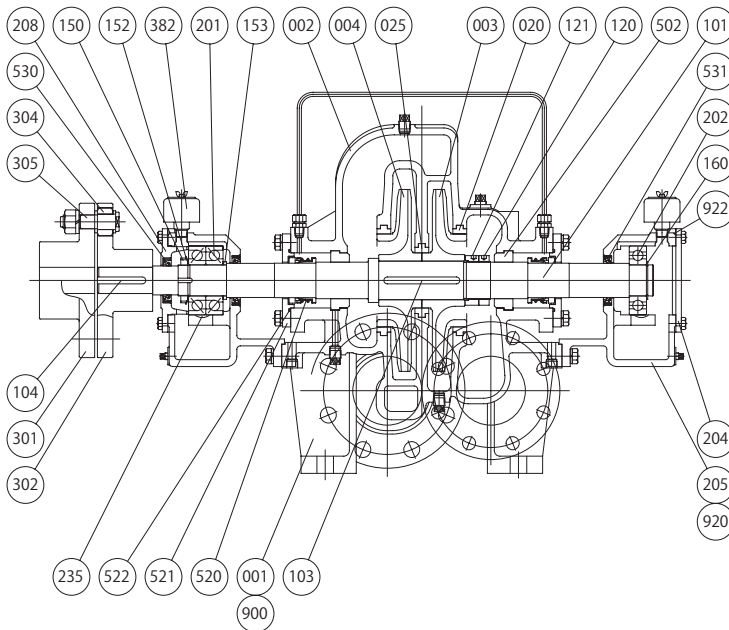
Application

Boiler Feed Water Pump

Feature

Horizontal Two-stage Single-suction

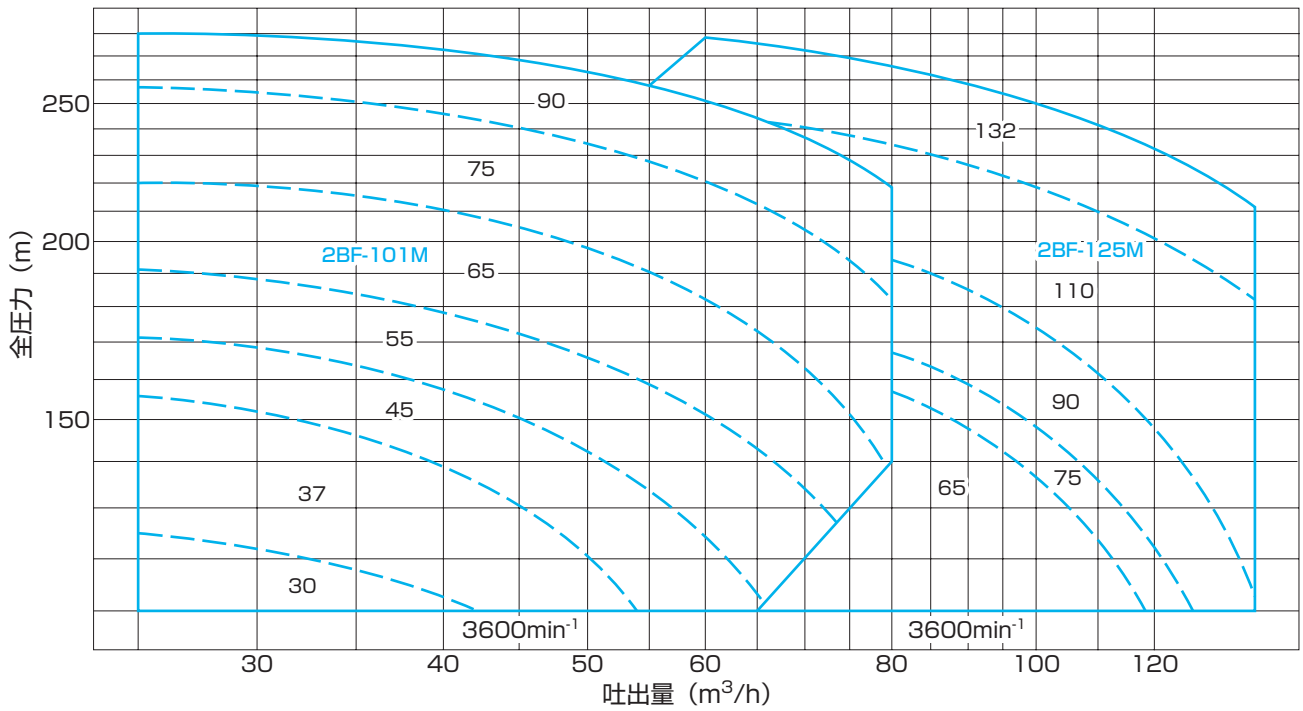
Structure & Material



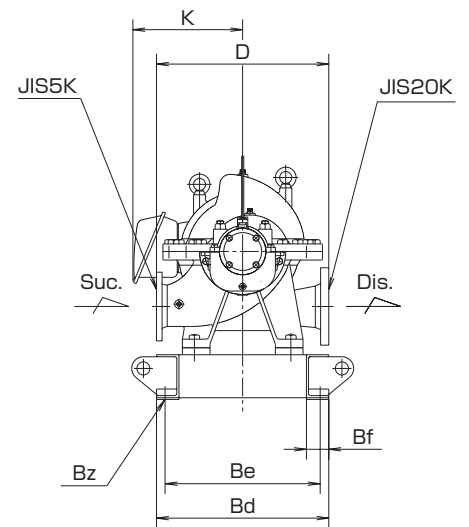
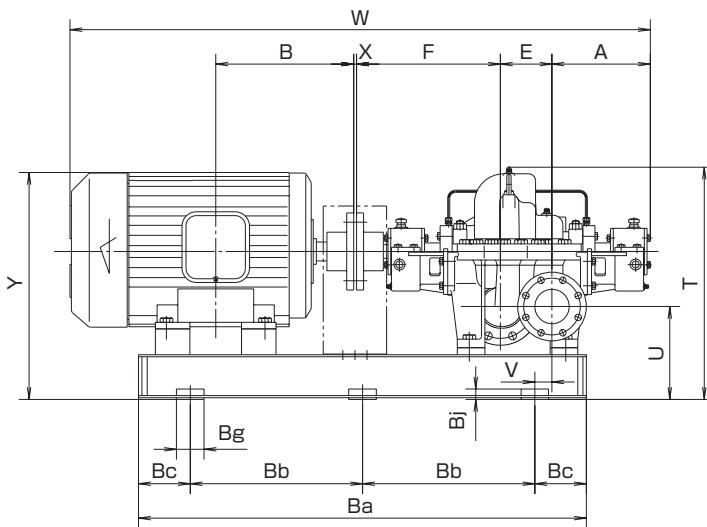
Part No.	Name	Req. No.	Feed Water	
			Material	JIS
001	CASING	1	DUCTILE CAST IRON	FCD400
002	CASING COVER	1	DUCTILE CAST IRON	FCD400
003	IMPELLER	1	STAINLESS STEEL	SCS13
004	IMPELLER	1	STAINLESS STEEL	SCS13
020	CASING RING	2	BRONZE	CAC402
025	STAGE RING	1	BRONZE	CAC402
101	SHAFT	1	STAINLESS STEEL	SUS403
103	KEY	1	STAINLESS STEEL	SUS304
104	KEY	1	CARBON STEEL	S45C
120	IMPELLER NUT	1	STAINLESS STEEL	SUS304
121	IMPELLER NUT	1	STAINLESS STEEL	SUS304
150	BEARING NUT	1	MILD STEEL	SS400
152	BEARING WASHER	1	MILD STEEL	SS400
153	BEARING SPACER	1	MILD STEEL	SS400
160	RETAINING RING	1	STAINLESS STEEL	SUS304
201	BALL BEARING	1SET	BEARING STEEL	SUJ2
202	BALL BEARING	1	BEARING STEEL	SUJ2
204	BEARING COVER	1	CAST IRON	FC200

Part No.	Name	Req. No.	Feed Water	
			Material	JIS
205	BEARING HOUSING	2	CAST IRON	FC200
208	BEARING COVER	1	CAST IRON	FC200
235	OIL LEVEL GAUGE	4	PLASTIC	—
301	COUPLING	1	CAST IRON	FC200
302	COUPLING	1	CAST IRON	FC200
304	COUPLING RING	8	RUBBER	NBR
305	COUPLING BOLT & NUT	8	MILD STEEL	SS400
382	AIR BREATHER	2	MILD STEEL	SS400
502	NECK BUSH	2	BRONZE	CAC402
520	MECHANICAL SEAL	2	SiC & CARBON	—
521	MECHANICAL SEAL COVER	2	STAINLESS STEEL	SUS304
522	O-RING	2	RUBBER	NBR
530	OIL SEAL	1	RUBBER	NBR
531	OIL SEAL	2	RUBBER	NBR
900	GASKET	1	PAPER	—
920	GASKET	2	PAPER	—
922	GASKET	2	PAPER	—

Performance



Dimension



Model No.	Motor		Bore		Dimension(mm)																					
	kW	min ⁻¹	Suc.	Dis.	A	B	D	E	F	K	T	U	V	W	X	Y	Ba	Bb	Bc	Bd	Be	Bf	Bg	Bj	Bz	
2BF-101M	30					370.5				330				1560		690	1300	500	150	500	450	65	80	30	6-φ24	
	37					395.5				345			1610	3	705											
	45					402				365	675	270	50	1637		725										
	55	3600	100	100	286	402	500	150	420	365	675	270	50	1637		725										
	65					452.5				405				1810	4	965	1400	550								
	75					452.5				405				1810	4	965	1400	550								
2BF-125M	65					452.5								1979		1000	1500	600	150	650	600	65	80	30	6-φ24	
	75					509.5	560	180	500	405	725	285	50	2089	4	1035	1600	650								
	90	3600	125	125	345	509.5	560	180	500	405	725	285	50	2089	4	1035	1600	650								
	110													2169												
	132													2169												