

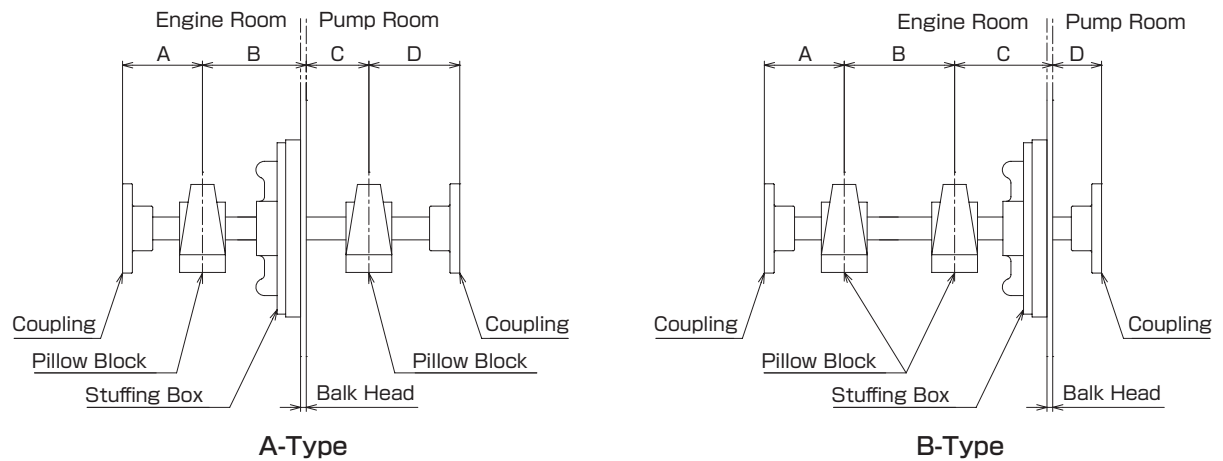
ACCESSORIES

INTERMEDIATE SHAFT

STUFFING BOX

PRIMING UNIT

Dimension



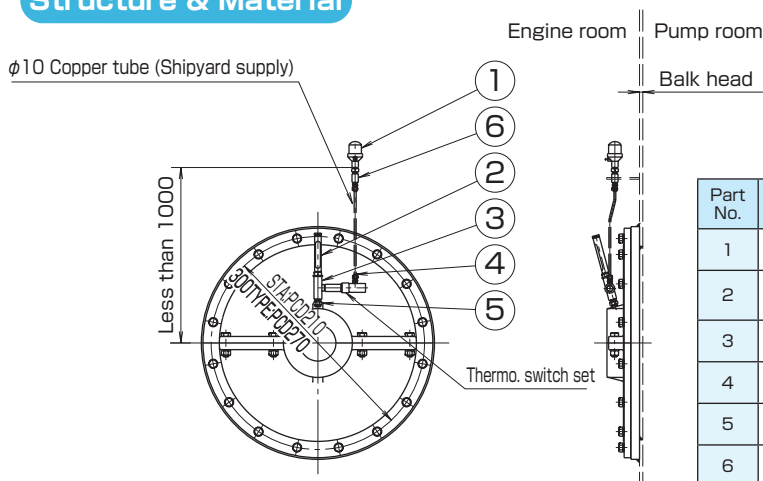
A-Type

Motor(kW) 4P	Shaft Dia.	Stuffing Box	Pillow Block	Coupling Size	Dimension(mm)			
					A	B	C	D
1.5 to 3.7	φ 25	A250C- φ 25G	UKP206+H2306	A-125	100	150	80	120
5.5 to 7.5	φ 30	A250C- φ 30G	UKP207+H2307	A-140	100	150	80	120
11 to 15	φ 35	A300C- φ 35G	UKP208+H2308	A-160	120	150	80	120
18.5 to 30	φ 40	A300C- φ 40G	UKP209+H2309	A-180	140	150	80	140
37 to 45	φ 45	A300C- φ 45G	UKP210+H2310	A-200	140	150	80	140

B-Type

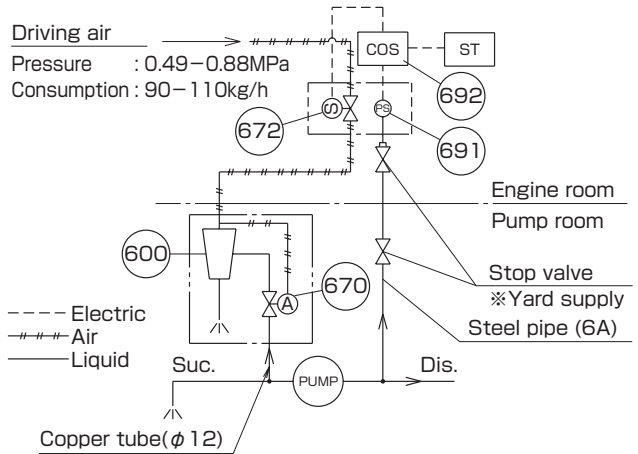
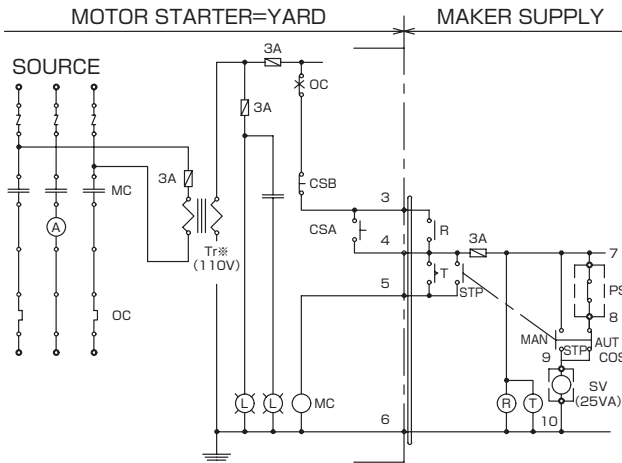
Motor(kW) 4P	Shaft Dia.	Stuffing Box	Pillow Block	Coupling Size	Dimension(mm)			
					A	B	C	D
1.5 to 3.7	φ 25	A250C- φ 25G	UKP206+H2306	A-125	100	200	150	100
5.5 to 7.5	φ 30	A250C- φ 30G	UKP207+H2307	A-140	100	200	150	100
11 to 15	φ 35	A300C- φ 35G	UKP208+H2308	A-160	120	200	150	100
18.5 to 30	φ 40	A300C- φ 40G	UKP209+H2309	A-180	140	200	150	100
37 to 45	φ 45	A300C- φ 45G	UKP210+H2310	A-200	140	220	150	120

Structure & Material



Part No.	Name	Req. No.	Material	JIS
1	GREASE CUP	1	-	-
2	THERMOMETER (WITH COVER)	1	-	-
3	TEE	1	CARBON STEEL	S25C
4	RING JOINT	2	BRONZE	CAC402
5	NIPPLE	1	IRON CASTING	FCMB
6	SOCKET	1	IRON CASTING	FCMB

Wiring Diagram & Piping Diagram



Operation

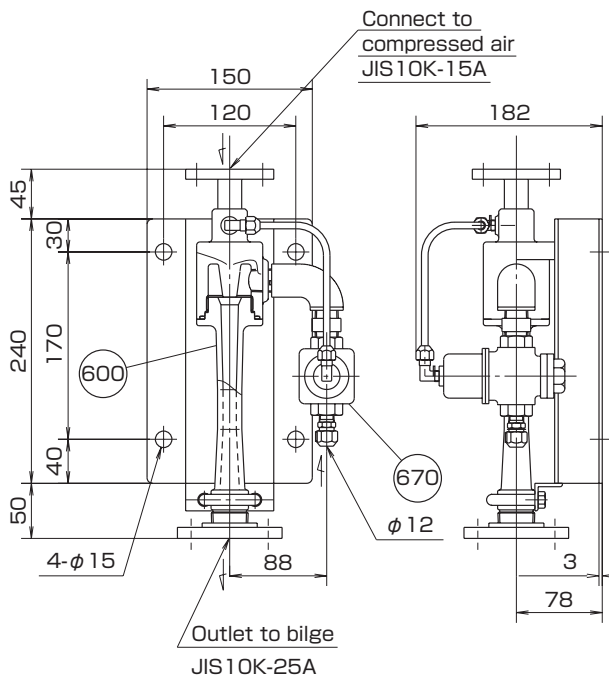
A timer "T" is included in the air ejector priming system. The timer can be adjusted at 0~180sec., depending on the volume of the suction line. The ejector starts when the switch for the Centrifugal pump is switched on, but the pump does not start until the preset time of timer "T" has elapsed. A pressure switch will switch off the ejector when the pump pressure is risen.

作動

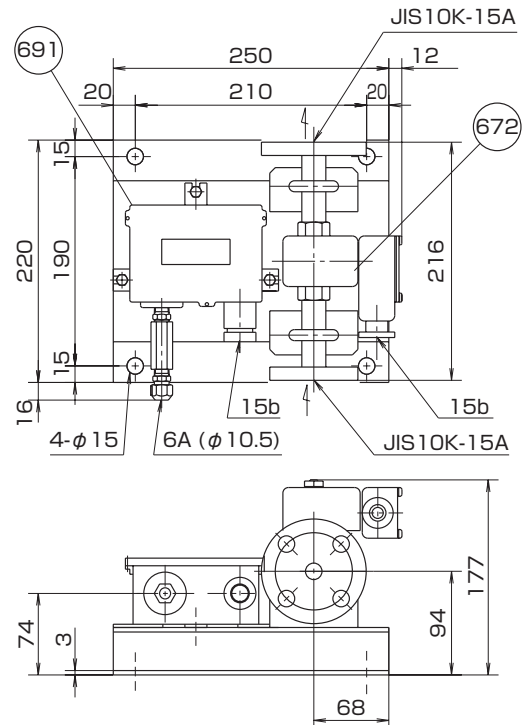
このエジェクタ式自動抽気装置にはタイマTが内蔵されています。このタイマは吸込管容積によって0~180秒の範囲で調整できます。遠心ポンプのスイッチをONにすると、このエジェクタが抽気を開始します。タイマTがタイムアウトするとポンプが起動し、ポンプの圧力が上昇すると圧力スイッチによりエジェクタは停止します。

Structure & Material

Ejector Unit



Solenoid Valve-pressure Sw. Unit



Part No.	Name	Req. No.	Material	JIS
600	EJECTOR UNIT	1	BRONZE	CAC402
670	AIR VALVE	1	BRONZE	CAC406
672	SOLENOID VALVE	1	BRONZE	CAC406

Part No.	Name	Req. No.	Material	JIS
691	PRESSURE SWITCH	1	-	-
692	TERMINAL BOX	1	-	-