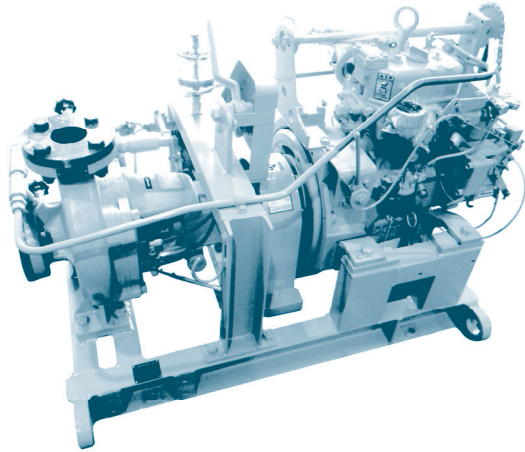


CENTRIFUGAL PUMP

EHCV



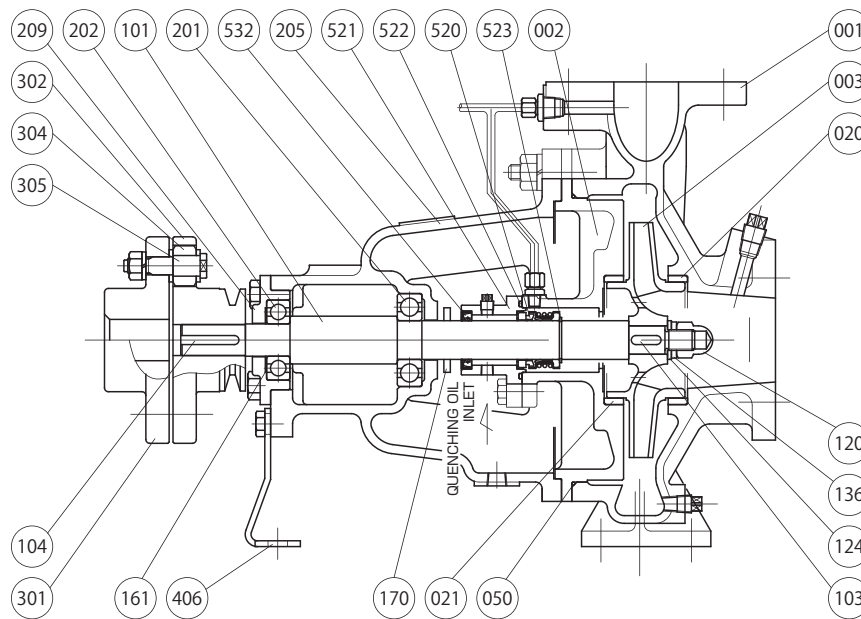
Application

Emergency Fire Pump

Feature

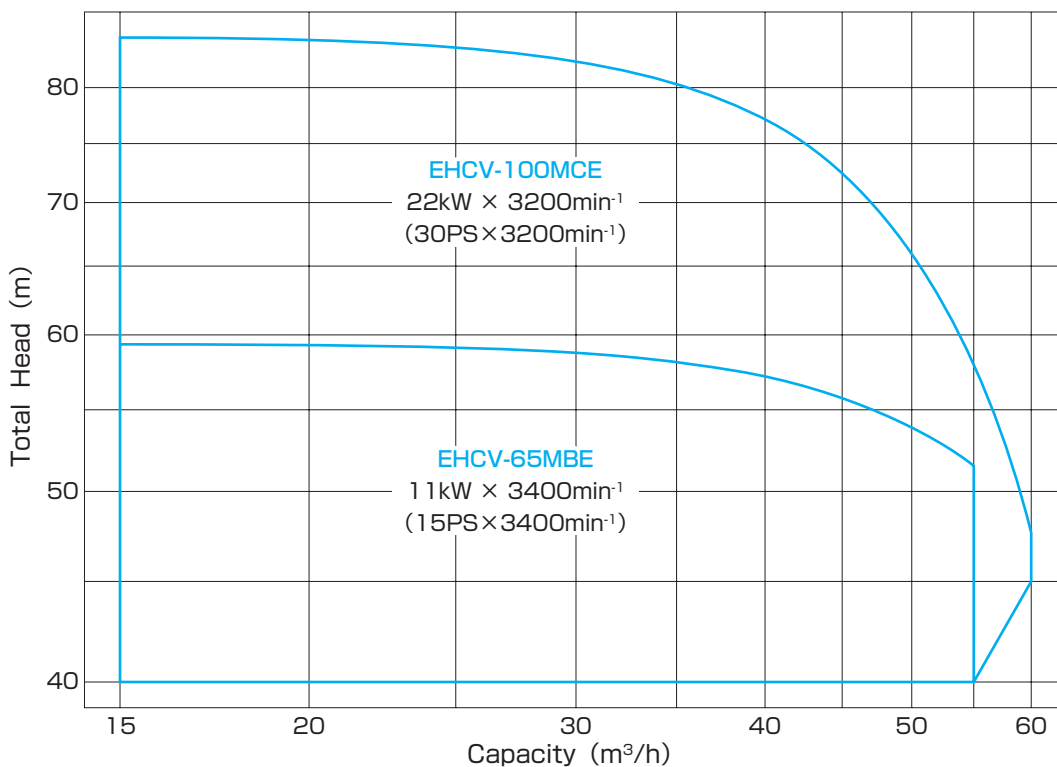
Horizontal Single-stage Single-suction
Self-priming Type(Diesel Engine Driven)

Structure & Material

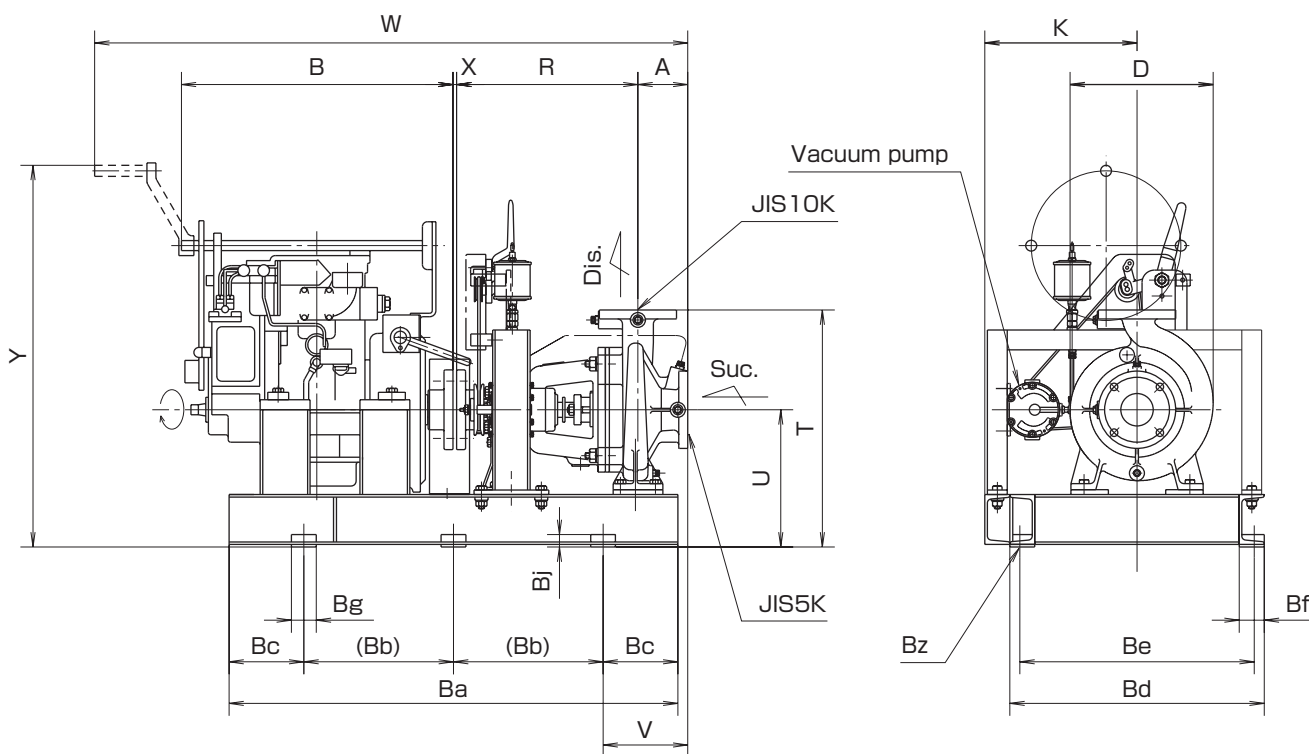


Part No.	Name	Req. No.	Sea Water		Fresh Water		Part No.	Name	Req. No.	Sea Water		Fresh Water	
			Material	JIS	Material	JIS				Material	JIS	Material	JIS
001	CASING	1	BRONZE	CAC402	CAST IRON	FC200	201	BALL BEARING	1	BEARING STEEL	SUU2	BEARING STEEL	SUU2
002	CASING COVER	1	BRONZE	CAC402	CAST IRON	FC200	202	BALL BEARING	1	BEARING STEEL	SUU2	BEARING STEEL	SUU2
003	IMPELLER	1	PHOSPHOR BRONZE	CAC502A	PHOSPHOR BRONZE	CAC502A	205	BEARING HOUSING	1	CAST IRON	FC200	CAST IRON	FC200
020	CASING RING	1	BRONZE	CAC402	BRONZE	CAC402	209	BEARING COVER	1	CAST IRON	FC200	CAST IRON	FC200
021	CASING RING	1	BRONZE	CAC402	BRONZE	CAC402	301	COUPLING	1	CAST IRON	FC200	CAST IRON	FC200
050	O-RING	1	RUBBER	NBR	RUBBER	NBR	302	COUPLING	1	CAST IRON	FC200	CAST IRON	FC200
101	SHAFT	1	STAINLESS STEEL	SUS304	STAINLESS STEEL	SUS304	304	COUPLING RING	8	RUBBER	NBR	RUBBER	NBR
103	KEY	1	STAINLESS STEEL	SUS304	STAINLESS STEEL	SUS304	305	COUPLING BOLT & NUT	8	MILD STEEL	SS400	MILD STEEL	SS400
104	KEY	1	CARBON STEEL	S45C	CARBON STEEL	S45C	406	SUPPORT	1	MILD STEEL	SS400	MILD STEEL	SS400
120	IMPELLER NUT	1	STAINLESS STEEL	SUS304	STAINLESS STEEL	SUS304	520	MECHANICAL SEAL	1	SiC & CARBON	—	SiC & CARBON	—
124	IMPELLER WASHER	1	STAINLESS STEEL	SUS304	STAINLESS STEEL	SUS304	521	MECHANICAL SEAL COVER	1	BRONZE	CAC402	BRONZE	CAC402
136	SPRING WASHER	1	STAINLESS STEEL	SUS304	STAINLESS STEEL	SUS304	522	O-RING	1	RUBBER	NBR	RUBBER	NBR
161	RETAINING RING	1	SPRING STEEL	SUP6	SPRING STEEL	SUP6	523	RETAINING RING	1	STAINLESS STEEL	SUS304	STAINLESS STEEL	SUS304
170	FLINGER	1	RUBBER	NBR	RUBBER	NBR	532	OIL SEAL	1	RUBBER	NBR	RUBBER	NBR

Performance



Dimension



Model No.	Engine		Bore		Dimension(mm)																			
	kW	min ⁻¹	Suc.	Dis.	A	B	D	K	R	T	U	V	W	X	Y	Ba	Bb	Bc	Bd	Be	Bf	Bg	Bj	Bz
EHCV-65MBE	11	3400	65	50	100	547	286	305	366	475	275	170	1190	3	766	900	600	150	510	470	50	50	25	4-φ15
EHCV-100MCE	22	3200	100	80	125	667	390	315	470	629	345	185	1525	3	989	1200	450	150	530	490	50	50	30	6-φ19