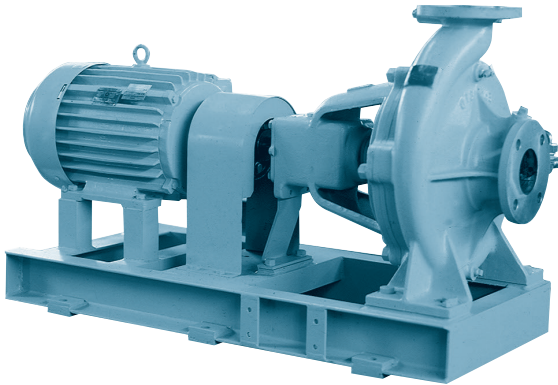


# CENTRIFUGAL PUMP

## EHC



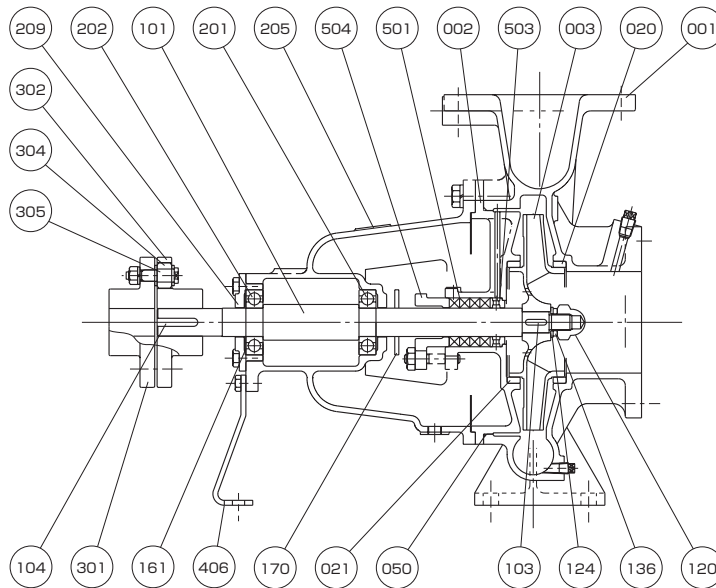
### Application

Cooling Fresh Water Pump  
Cooling Sea Water Pump  
Sea Water Service Pump

### Feature

Horizontal Single-stage Single-suction

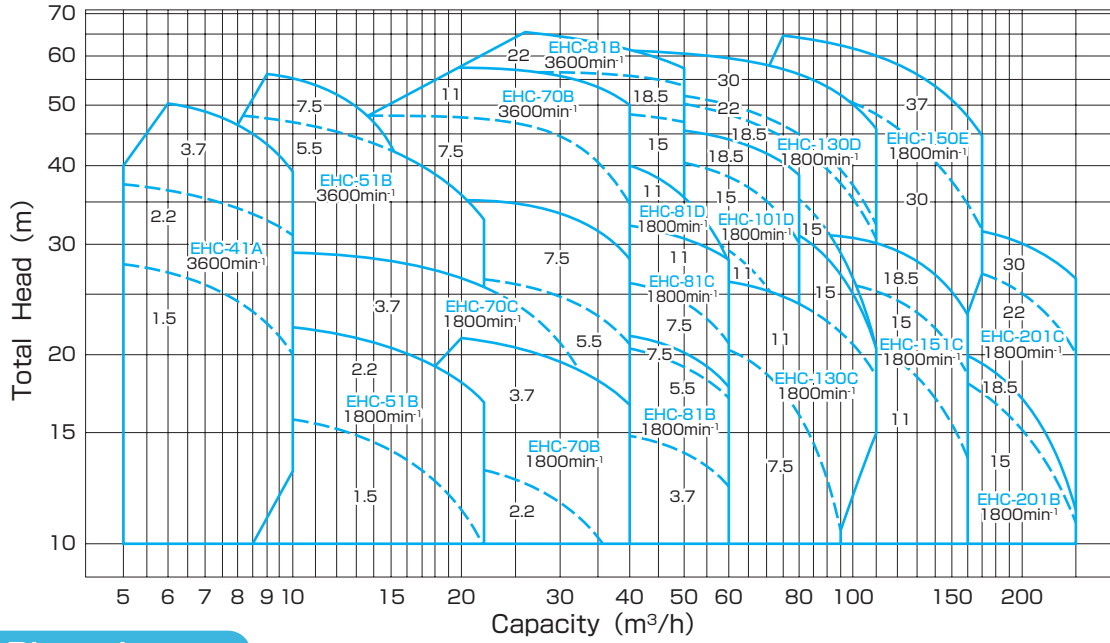
### Structure & Material



| Part No. | Name            | Req. No. | Sea Water       |         | Fresh Water     |         |
|----------|-----------------|----------|-----------------|---------|-----------------|---------|
|          |                 |          | Material        | JIS     | Material        | JIS     |
| 001      | CASING          | 1        | BRONZE          | CAC402  | CAST IRON       | FC200   |
| 002      | CASING COVER    | 1        | BRONZE          | CAC402  | CAST IRON       | FC200   |
| 003      | IMPELLER        | 1        | PHOSPHOR BRONZE | CAC502A | PHOSPHOR BRONZE | CAC502A |
| 020      | CASING RING     | 1        | BRONZE          | CAC402  | BRONZE          | CAC402  |
| 021      | CASING RING     | 1        | BRONZE          | CAC402  | BRONZE          | CAC402  |
| 050      | O-RING          | 1        | RUBBER          | NBR     | RUBBER          | NBR     |
| 101      | SHAFT           | 1        | STAINLESS STEEL | SUS304  | STAINLESS STEEL | SUS304  |
| 103      | IMPELLER KEY    | 1        | STAINLESS STEEL | SUS304  | STAINLESS STEEL | SUS304  |
| 104      | COUPLING KEY    | 1        | CARBON STEEL    | S45C    | CARBON STEEL    | S45C    |
| 120      | IMPELLER NUT    | 1        | STAINLESS STEEL | SUS304  | STAINLESS STEEL | SUS304  |
| 124      | IMPELLER WASHER | 1        | STAINLESS STEEL | SUS304  | STAINLESS STEEL | SUS304  |
| 136      | SPRING WASHER   | 1        | STAINLESS STEEL | SUS304  | STAINLESS STEEL | SUS304  |
| 161      | RETAINING RING  | 1        | SPRING STEEL    | SUP6    | SPRING STEEL    | SUP6    |

| Part No. | Name                | Req. No. | Sea Water        |        | Fresh Water      |        |
|----------|---------------------|----------|------------------|--------|------------------|--------|
|          |                     |          | Material         | JIS    | Material         | JIS    |
| 170      | FLINGER             | 1        | RUBBER           | NBR    | RUBBER           | NBR    |
| 201      | BALL BEARING        | 1        | BEARING STEEL    | SUJ2   | BEARING STEEL    | SUJ2   |
| 202      | BALL BEARING        | 1        | BEARING STEEL    | SUJ2   | BEARING STEEL    | SUJ2   |
| 205      | BEARING HOUSING     | 1        | CAST IRON        | FC200  | CAST IRON        | FC200  |
| 209      | BEARING COVER       | 1        | CAST IRON        | FC200  | CAST IRON        | FC200  |
| 301      | COUPLING            | 1        | CAST IRON        | FC200  | CAST IRON        | FC200  |
| 302      | COUPLING            | 1        | CAST IRON        | FC200  | CAST IRON        | FC200  |
| 304      | COUPLING RING       | 8        | RUBBER           | NBR    | RUBBER           | NBR    |
| 305      | COUPLING BOLT & NUT | 8        | MILD STEEL       | SS400  | MILD STEEL       | SS400  |
| 406      | SUPPORT             | 1        | MILD STEEL       | SS400  | MILD STEEL       | SS400  |
| 501      | GLAND PACKING       | 4        | CARBONIZED FIBER | -      | CARBONIZED FIBER | -      |
| 503      | LANTERN RING        | 1        | BRONZE           | CAC402 | BRONZE           | CAC402 |
| 504      | GLAND               | 4        | BRONZE           | CAC402 | BRONZE           | CAC402 |

## Performance



## Dimension

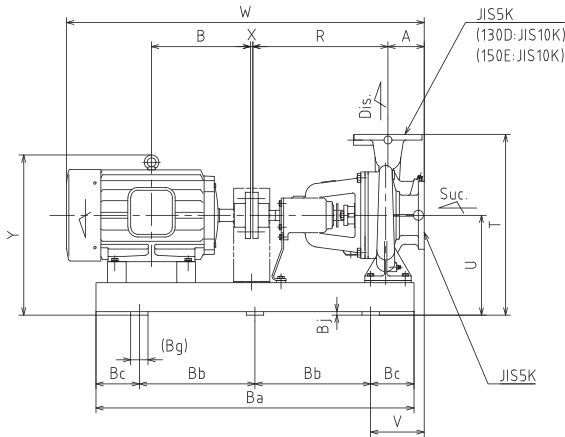


Fig.1

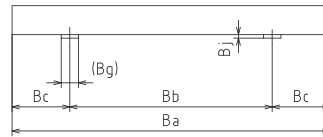
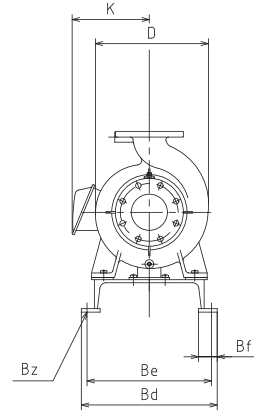


Fig.2



| Model No. | Motor |                   | Bore |      |     | Dimension(mm) |     |     |     |     |     |     |        |   |     |      |      |     |     |     |    |    |    |       |
|-----------|-------|-------------------|------|------|-----|---------------|-----|-----|-----|-----|-----|-----|--------|---|-----|------|------|-----|-----|-----|----|----|----|-------|
|           | kW    | min <sup>-1</sup> | Suc. | Dis. | A   | B             | D   | K   | R   | T   | U   | V   | W      | X | Y   | Ba   | Bb   | Bc  | Bd  | Be  | Bf | Bg | Bj | Bz    |
| EHC-41A   | 1.5   | 3600              | 40   | 40   | 80  | 168.5         | 207 | 188 | 360 | 400 | 240 | 145 | 773.5  | 3 | 335 | 700  | *450 | 125 | 325 | 290 | 55 | 50 | 12 | 4-φ15 |
|           | 2.2   |                   |      |      |     | 200           |     | 212 |     |     |     |     | 841    |   | 386 | 800  | *500 | 150 |     |     |    |    |    |       |
|           | 3.7   |                   |      |      |     | 168.5         |     | 188 |     |     |     |     | 793.5  |   | 365 | 700  | *450 | 125 |     |     | 55 |    |    |       |
| EHC-51B   | 1.5   | 1800              | 50   | 50   | 100 | 193           | 268 | 197 | 360 | 450 | 270 | 165 | 841    | 3 | 375 | 800  | *450 | 150 | 325 | 290 | 50 | 50 | 12 | 4-φ15 |
|           | 2.2   |                   |      |      |     | 239           |     | 245 |     |     |     |     | 917    |   | 428 | 800  | *500 | 150 |     |     |    |    |    |       |
|           | 5.5   | 3600              |      |      |     | 193           |     | 197 |     |     |     |     | 841    |   | 375 | 700  | *450 | 125 |     |     | 50 |    |    |       |
| EHC-70B   | 2.2   | 1800              | 65   | 65   | 100 | 200           | 286 | 212 | 360 | 470 | 270 | 165 | 861    | 3 | 416 | 800  | *500 | 150 | 325 | 290 | 55 | 50 | 12 | 4-φ15 |
|           | 3.7   |                   |      |      |     | 239           |     | 245 |     |     |     |     | 917    |   | 428 | 800  | *500 | 150 |     |     | 50 |    |    |       |
|           | 7.5   | 3600              |      |      |     | 323           |     | 285 |     |     |     |     | 1071   |   | 500 | 1000 | *700 |     | 390 | 350 | 65 | 60 | 12 | 4-φ19 |
| EHC-70C   | 3.7   | 1800              | 65   | 65   | 100 | 200           | 338 | 212 | 360 | 515 | 290 | 165 | 861    | 3 | 436 | 800  | *500 | 150 | 390 | 350 | 65 | 60 | 12 | 4-φ15 |
|           | 5.5   |                   |      |      |     | 239           |     | 245 |     |     |     |     | 917    |   | 448 | 800  | *500 | 150 |     |     |    |    |    |       |
|           | 7.5   | 3600              |      |      |     | 258           |     | 285 |     |     |     |     | 956    |   | 448 | 900  | *550 | 175 |     |     |    |    |    |       |
| EHC-81B   | 3.7   | 1800              | 80   | 80   | 100 | 200           | 326 | 212 | 360 | 515 | 290 | 165 | 861    | 3 | 436 | 800  | *500 | 150 | 390 | 350 | 65 | 60 | 12 | 4-φ15 |
|           | 5.5   |                   |      |      |     | 239           |     | 245 |     |     |     |     | 917    |   | 448 | 800  | *500 | 150 |     |     |    |    |    |       |
|           | 7.5   | 3600              |      |      |     | 258           |     | 285 |     |     |     |     | 956    |   | 448 | 900  | *550 | 175 |     |     |    |    |    |       |
| EHC-81C   | 11    | 1800              | 80   | 80   | 100 | 200           | 326 | 212 | 360 | 515 | 290 | 165 | 861    | 3 | 436 | 800  | *500 | 150 | 390 | 350 | 65 | 60 | 12 | 4-φ19 |
|           | 15    |                   |      |      |     | 239           |     | 245 |     |     |     |     | 917    |   | 448 | 800  | *500 | 150 |     |     |    |    |    |       |
|           | 18.5  | 3600              |      |      |     | 345           |     | 285 |     |     |     |     | 1071   |   | 520 | 1000 | *700 |     | 470 | 430 |    |    |    |       |
| EHC-81D   | 2.2   | 1800              | 80   | 80   | 100 | 200           | 326 | 212 | 360 | 515 | 290 | 165 | 861    | 3 | 436 | 800  | *500 | 150 | 390 | 350 | 65 | 60 | 12 | 4-φ19 |
|           | 3.7   |                   |      |      |     | 239           |     | 245 |     |     |     |     | 917    |   | 448 | 800  | *500 | 150 |     |     |    |    |    |       |
|           | 5.5   | 3600              |      |      |     | 345           |     | 285 |     |     |     |     | 1071   |   | 520 | 1000 | *700 |     | 470 | 430 |    |    |    |       |
| EHC-101D  | 11    | 1800              | 100  | 100  | 125 | 323           | 413 | 285 | 470 | 625 | 345 | 185 | 1206   | 3 | 575 | 1100 | 400  | 150 | 470 | 430 | 65 | 60 | 12 | 6-φ19 |
|           | 15    |                   |      |      |     | 345           |     | 285 |     |     |     |     | 1206   |   | 600 | 1100 | 400  | 150 |     |     |    |    |    |       |
|           | 18.5  | 3600              |      |      |     | 351.5         |     | 330 |     |     |     |     | 1259.5 |   | 630 | 1000 | 350  |     | 470 | 430 | 65 | 60 | 12 | 6-φ19 |
| EHC-130C  | 7.5   | 1800              | 125  | 125  | 125 | 323           | 390 | 285 | 470 | 625 | 345 | 185 | 1206   | 3 | 575 | 1100 | 400  | 150 | 470 | 430 | 65 | 60 | 12 | 6-φ19 |
|           | 11    |                   |      |      |     | 345           |     | 285 |     |     |     |     | 1248   |   | 575 | 1100 | 400  | 150 |     |     |    |    |    |       |
|           | 15    | 3600              |      |      |     | 345           |     | 285 |     |     |     |     | 1368   |   | 600 | 1100 | 400  | 150 |     |     |    |    |    |       |
| EHC-130D  | 18.5  | 1800              | 125  | 100  | 140 | 351.5         | 440 | 330 | 575 | 685 | 370 | 200 | 1379.5 | 3 | 630 | 1200 | 450  | 150 | 470 | 430 | 65 | 60 | 12 | 6-φ19 |
|           | 22    |                   |      |      |     | 370.5         |     | 330 |     |     |     |     | 1418.5 |   |     |      |      |     |     |     |    |    |    |       |
|           | 30    | 3600              |      |      |     | 323           |     | 285 |     |     |     |     | 1221   |   | 575 | 1100 | 400  | 150 | 470 | 430 | 65 | 60 | 12 | 6-φ19 |
| EHC-151C  | 11    | 1800              | 150  | 150  | 140 | 323           | 427 | 285 | 470 | 625 | 345 | 200 | 1263   | 3 | 605 | 1100 | 400  | 150 | 470 | 430 | 65 | 60 | 12 | 6-φ19 |
|           | 15    |                   |      |      |     | 345           |     | 330 |     |     |     |     | 1274.5 |   | 605 | 1100 | 400  | 150 |     |     |    |    |    |       |
|           | 18.5  | 3600              |      |      |     | 351.5         |     | 330 |     |     |     |     | 1274.5 |   | 605 | 1100 | 400  | 150 |     |     |    |    |    |       |
| EHC-150E  | 30    | 1800              | 150  | 125  | 140 | 370.5         | 576 | 330 | 530 | 865 | 465 | 170 | 1373.5 | 3 | 725 | 1300 | 500  | 150 | 550 | 500 | 65 | 60 | 25 | 6-φ24 |
|           | 37    |                   |      |      |     | 425.5         |     | 345 |     |     |     |     | 1454.5 | 4 | 740 | 1300 | 500  | 150 |     |     |    |    |    |       |
|           | 15    | 3600              |      |      |     | 345           |     | 330 |     |     |     |     | 1274.5 |   | 600 | 1100 | 400  | 150 | 470 | 430 | 65 | 60 | 12 | 6-φ19 |
| EHC-201B  | 15    | 1800              | 200  | 200  | 140 | 345           | 450 | 285 | 470 | 685 | 370 | 200 | 1263   | 3 | 630 | 1100 | 400  | 150 | 470 | 430 | 65 | 60 | 12 | 6-φ19 |
|           | 18.5  |                   |      |      |     | 351.5         |     | 330 |     |     |     |     | 1274.5 |   | 630 | 1100 | 400  | 150 |     |     |    |    |    |       |
|           | 22    | 3600              |      |      |     | 351.5         |     | 330 |     |     |     |     | 1274.5 |   | 630 | 1100 | 400  | 150 | 470 | 430 | 65 | 60 | 12 | 6-φ19 |
| EHC-201C  | 22    | 1800              | 200  | 200  | 140 | 351.5         | 475 | 330 | 470 | 725 | 370 | 200 | 1274.5 | 3 | 630 | 1100 | 400  | 150 | 470 | 430 | 65 | 60 | 12 | 6-φ19 |
|           | 30    |                   |      |      |     | 370.5         |     | 330 |     |     |     |     | 1313.5 |   | 630 | 1200 | 450  | 150 |     |     |    |    |    |       |

\*の寸法は Fig.2 を参照ください。\* Please refer to the dimension of Fig.2.