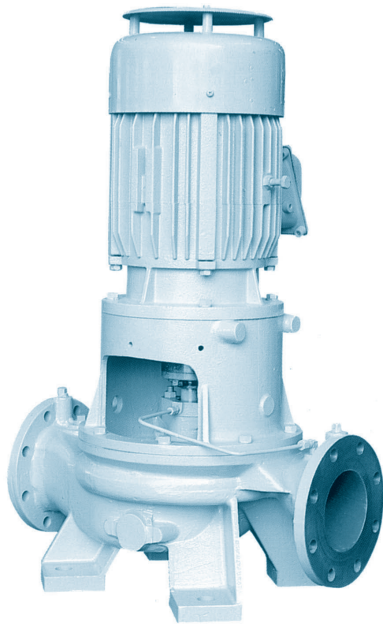


CENTRIFUGAL PUMP

EMC-MD



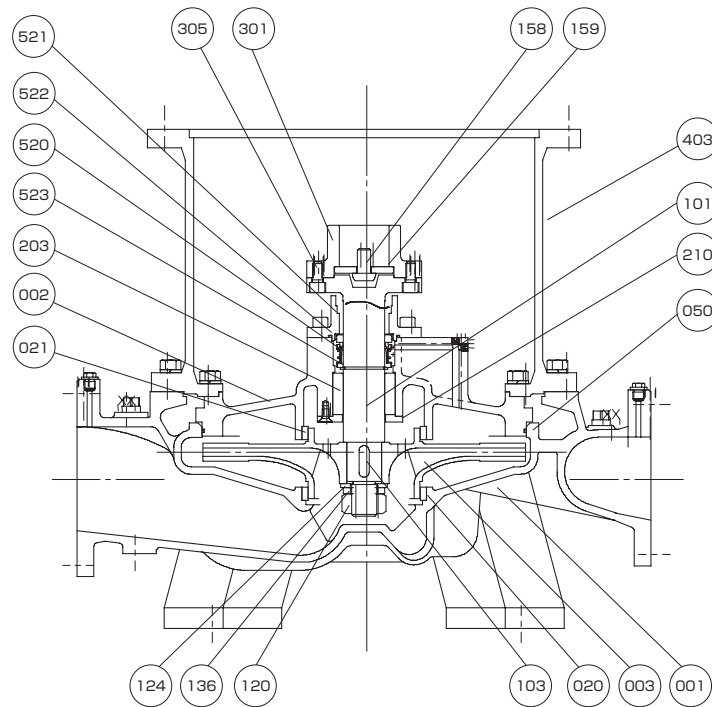
Application

Fire & G.S. Pump
Fire & Bilge Ballast Pump

Feature

Vertical Single-stage Single-suction
Closed Coupling Type

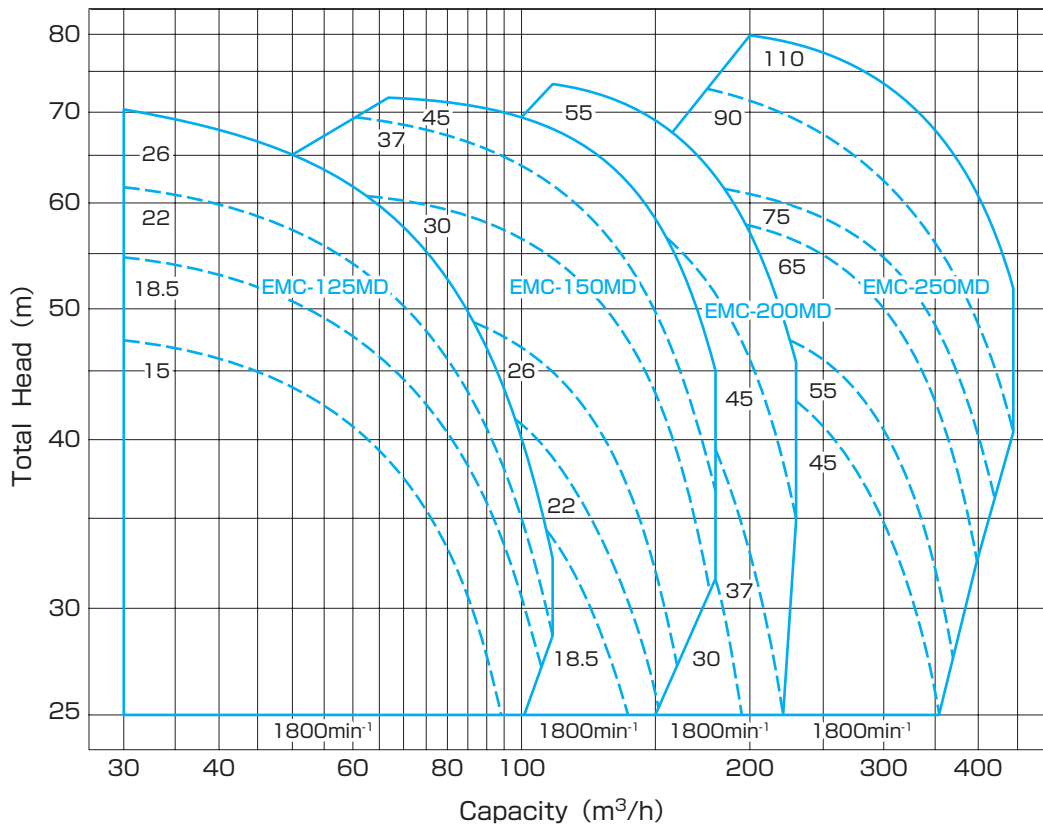
Structure & Material



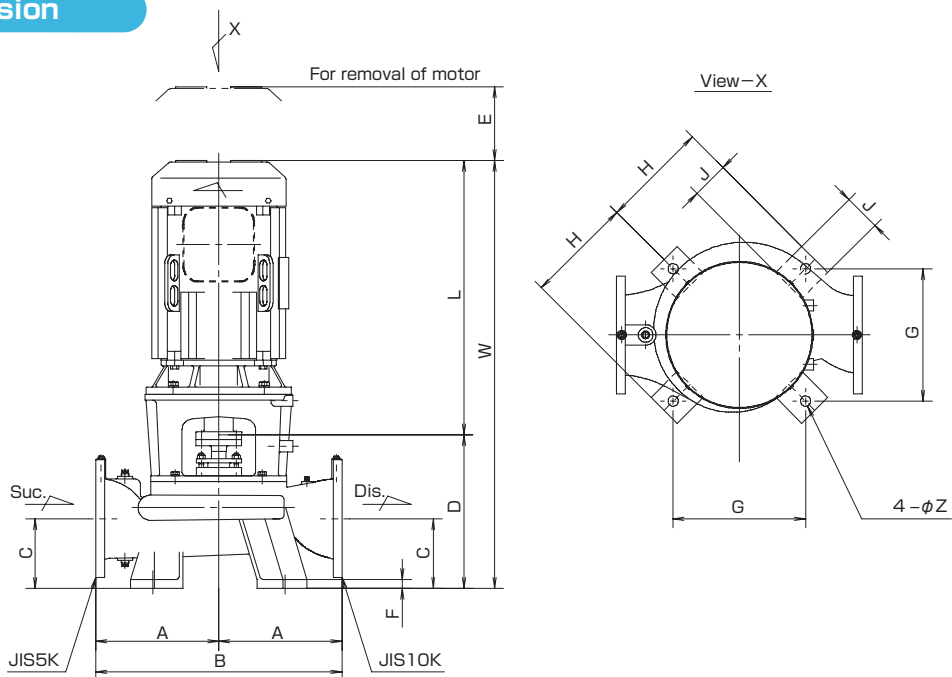
Part No.	Name	Req. No.	Sea Water		Fresh Water	
			Material	JIS	Material	JIS
001	CASING	1	BRONZE	CAC402	CAST IRON	FC200
002	CASING COVER	1	BRONZE	CAC402	CAST IRON	FC200
003	IMPELLER	1	PHOSPHOR BRONZE	CAC502A	PHOSPHOR BRONZE	CAC502A
020	CASING RING	1	BRONZE	CAC402	BRONZE	CAC402
021	CASING RING	1	BRONZE	CAC402	BRONZE	CAC402
050	O-RING	1	RUBBER	NBR	RUBBER	NBR
101	SHAFT	1	STAINLESS STEEL	SUS304	STAINLESS STEEL	SUS304
103	KEY	1	STAINLESS STEEL	SUS304	STAINLESS STEEL	SUS304
120	IMPELLER NUT	1	STAINLESS STEEL	SUS304	STAINLESS STEEL	SUS304
124	IMPELLER WASHER	1	STAINLESS STEEL	SUS304	STAINLESS STEEL	SUS304
136	SPRING WASHER	1	STAINLESS STEEL	SUS304	STAINLESS STEEL	SUS304

Part No.	Name	Req. No.	Sea Water		Fresh Water	
			Material	JIS	Material	JIS
158	SET SCREW	1	Cr-Mo STEEL	SCM435	Cr-Mo STEEL	SCM435
159	STOPPER RING	1	MILD STEEL	SS400	MILD STEEL	SS400
203	CARBON METAL	1	CARBON	—	CARBON	—
210	METAL COVER	1	BRONZE	CAC402	BRONZE	CAC402
301	COUPLING	1	CARBON STEEL	S45C	CARBON STEEL	S45C
305	COUPLING BOLT	8	Cr-Mo STEEL	SCM435	Cr-Mo STEEL	SCM435
403	FRAME	1	CAST IRON	FC200	CAST IRON	FC200
520	MECHANICAL SEAL	1	Sic & CARBON	—	Sic & CARBON	—
521	MECH. SEAL COVER	1	BRONZE	CAC402	BRONZE	CAC402
522	O-RING	1	BUBBER	NBR	BUBBER	NBR
523	RETAINING RING	1	STAINLSS STEEL	SUS304	STAINLSS STEEL	SUS304

Performance



Dimension



Model No.	Motor		Bore		Dimension(mm)											
	kW	min ⁻¹	Suc.	Dis.	A	B	C	D	E	F	G	H	J	L	W	Z
EMC-125MD	15	1800	125	100	345	690	180	435	200	25	360	290	100	630	1065	28
	18.5													685	1120	
	22													725	1160	
	26													685	1126	
EMC-150MD	18.5	1800	150	125	345	690	180	441	200	25	360	290	100	725	1166	28
	22													800	1241	
	30								200	725	1179					
	37								250	800	1251					
EMC-200MD	30	1800	200	150	365	730	190	451	200	25	360	290	100	800	1401	28
	37													950	1401	
	45								250	800	1353					
	55								250	950	1503					
EMC-250MD	45	1800	250	200	460	920	230	553	250	25	480	380	100	800	1353	28
	55													950	1503	
	65								1050	1603						
	75								1210	1763						
	90								1210	1763						
110	300	1210	1763													