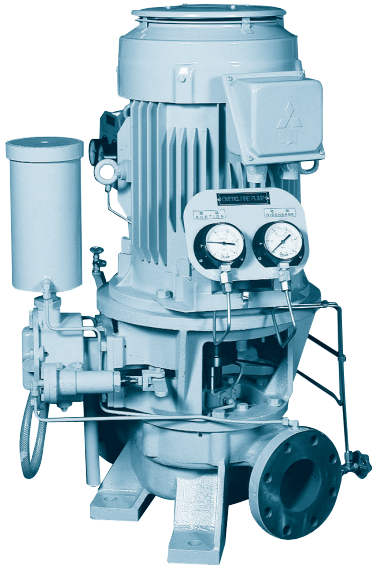


CENTRIFUGAL PUMP

EMCN



Application

Emergency Fire Pump

Feature

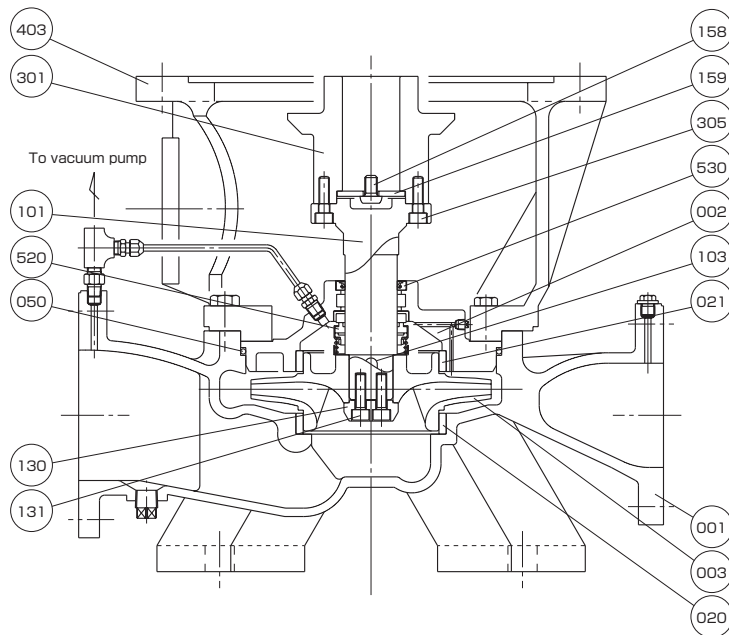
Vertical Single-stage Single-suction
Self-priming Closed Coupling Type
(Electric Motor-driven)

オプション

Option

ポンプ噴水下に設置されている場合、自動逆止弁が必要となります。 If a pump is installed below the draft, there is need to fit a auto check valve on the pump.

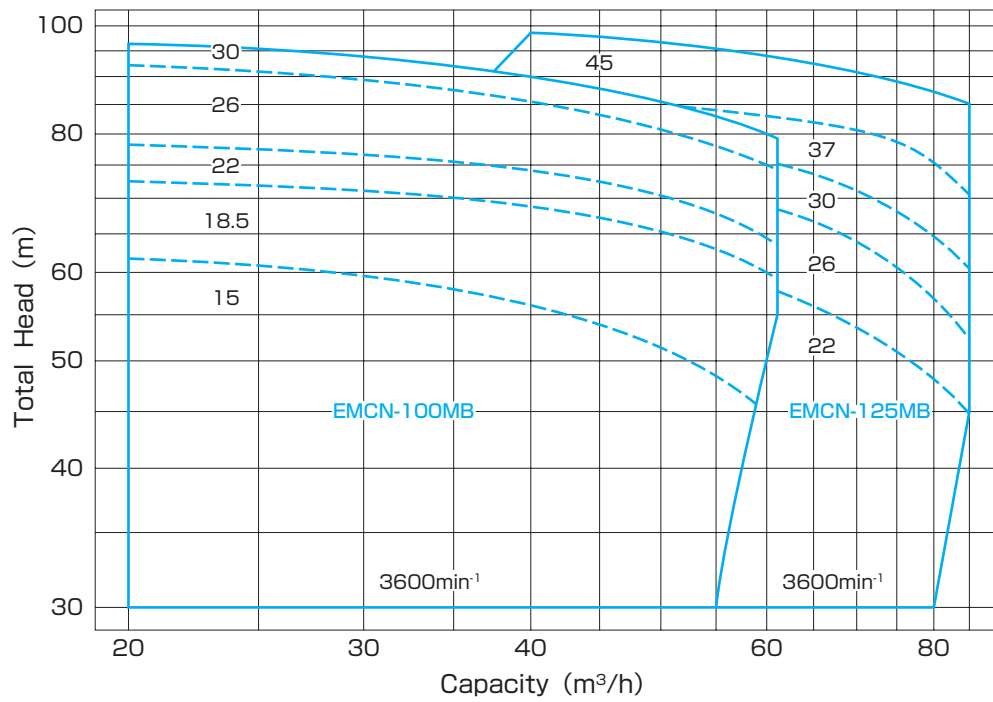
Structure & Material



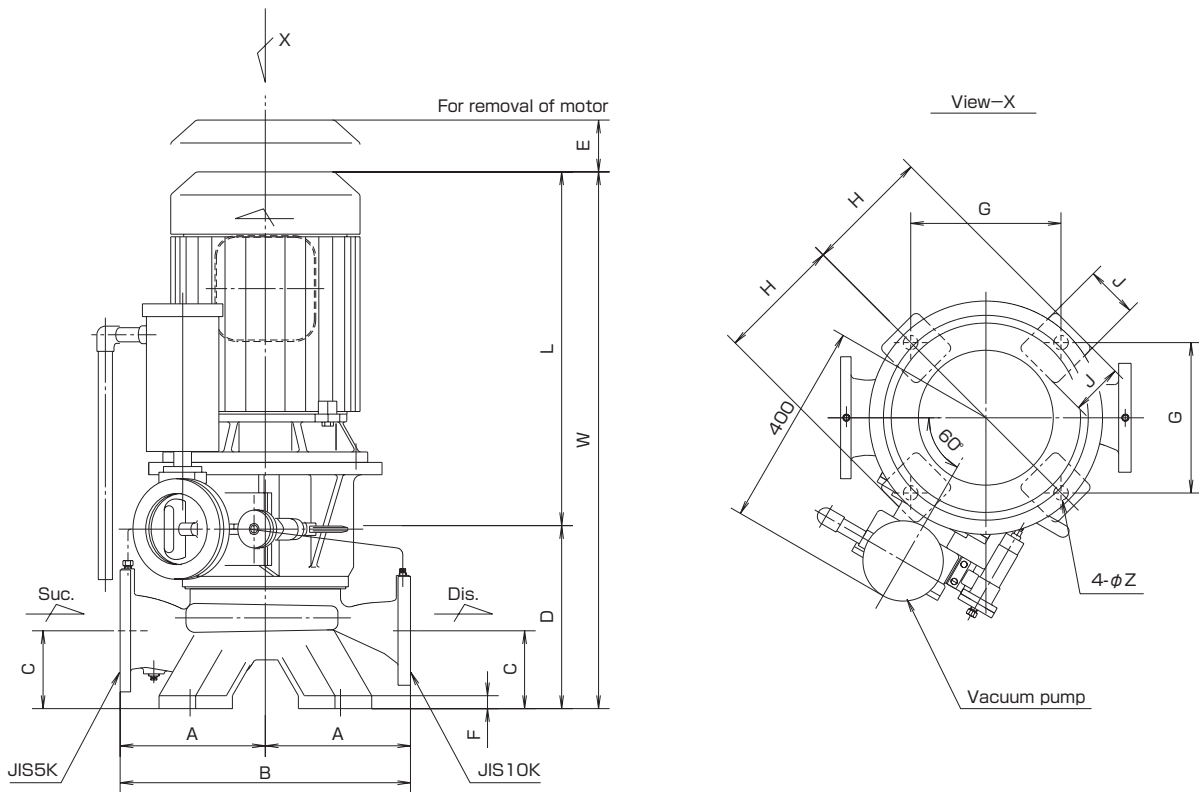
Part No.	Name	Req. No.	Sea Water		Fresh Water	
			Material	JIS	Material	JIS
001	CASING	1	BRONZE	CAC402	CAST IRON	FC200
002	CASING COVER	1	BRONZE	CAC402	CAST IRON	FC200
003	IMPELLER	1	PHOSPHOR BRONZE	CAC502A	PHOSPHOR BRONZE	CAC502A
020	CASING RING	1	BRONZE	CAC402	BRONZE	CAC402
021	CASING RING	1	BRONZE	CAC402	BRONZE	CAC402
050	O-RING	1	RUBBER	NBR	RUBBER	NBR
101	SHAFT	1	STAINLESS STEEL	SUS304	STAINLESS STEEL	SUS304
103	KEY	1	STAINLESS STEEL	SUS304	STAINLESS STEEL	SUS304
130	HUB CAP	1	STAINLESS STEEL	SUS304	STAINLESS STEEL	SUS304

Part No.	Name	Req. No.	Sea Water		Fresh Water	
			Material	JIS	Material	JIS
131	SCREW	2	STAINLESS STEEL	SUS304	STAINLESS STEEL	SUS304
158	SET SCREW	1	Cr-Mo STEEL	SCM435	Cr-Mo STEEL	SCM435
159	STOPPER RING	1	MILD STEEL	SS400	MILD STEEL	SS400
301	COUPLING	1	DUCTILE CAST IRON	FCD400	DUCTILE CAST IRON	FCD400
305	COUPLING BOLT	4	Cr-Mo STEEL	SCM435	Cr-Mo STEEL	SCM435
403	FRAME	1	CAST IRON	FC200	CAST IRON	FC200
520	MECHANICAL SEAL	1	Sic & CARBON	-	Sic & CARBON	-
530	OIL SEAL	1	RUBBER	NBR	RUBBER	NBR

Performance



Dimension



Model No.	Motor		Bore		Dimension(mm)											
	kW	min ⁻¹	Suc.	Dis.	A	B	C	D	E	F	G	H	J	L	W	Z
EMCN-100MB	15	3600	100	80	260	520	140	355	200	25	290	240	100	635	990	28
	18.5													685	1040	
	22													725	1080	
	26													725	1080	
EMCN-125MB	22	3600	125	100	280	560	150	365	250	25	290	240	100	685	1050	28
	26													725	1090	
	30													770	1135	
	37													770	1135	
45																