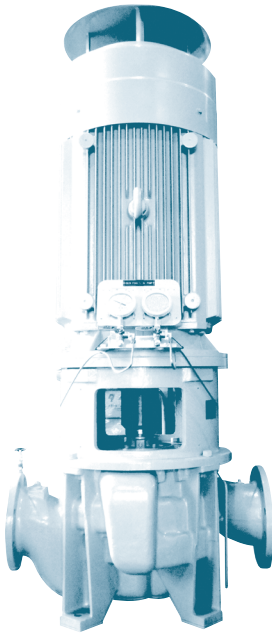


CENTRIFUGAL PUMP

EMS-MD



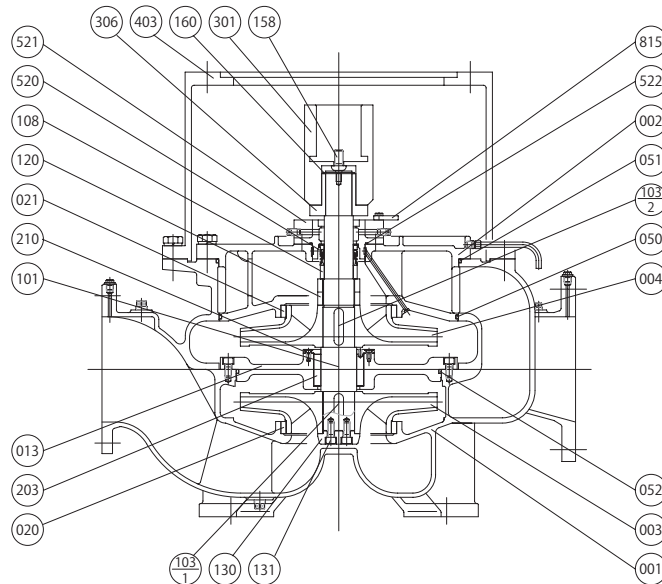
Application

Fire & G.S. Pump
Bilge & Ballast Pump

Feature

Vertical Two-stage Single-suction
Closed Coupling Type

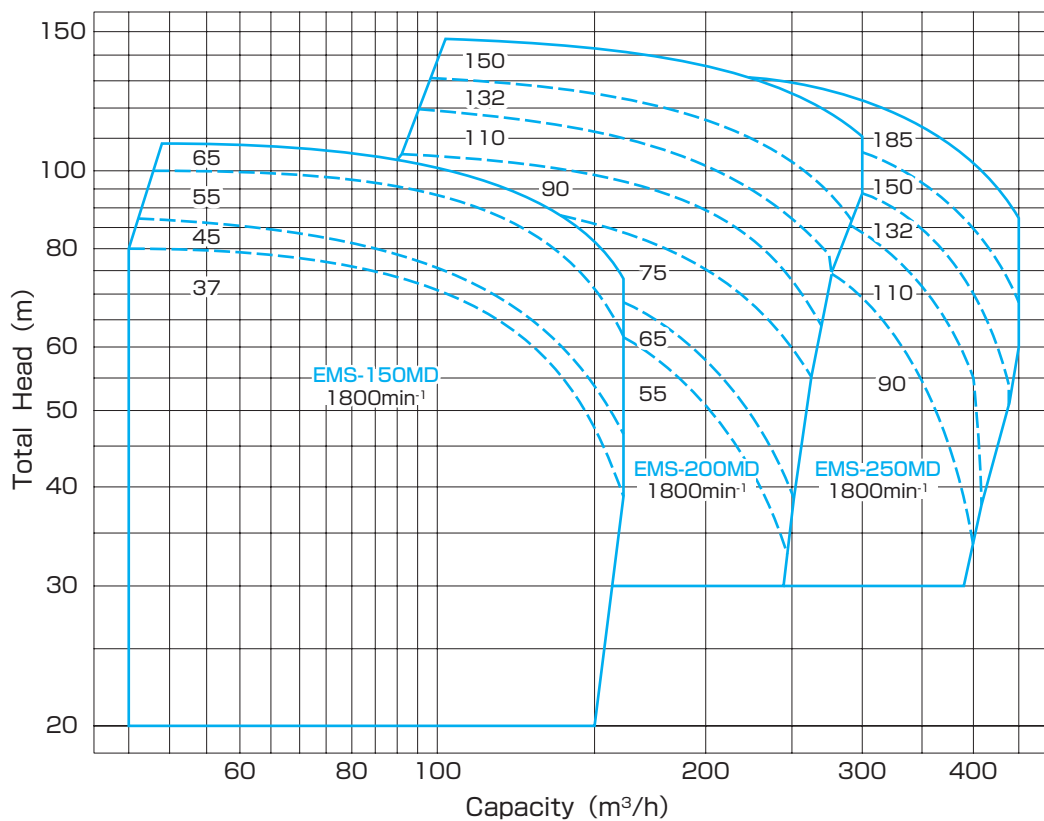
Structure & Material



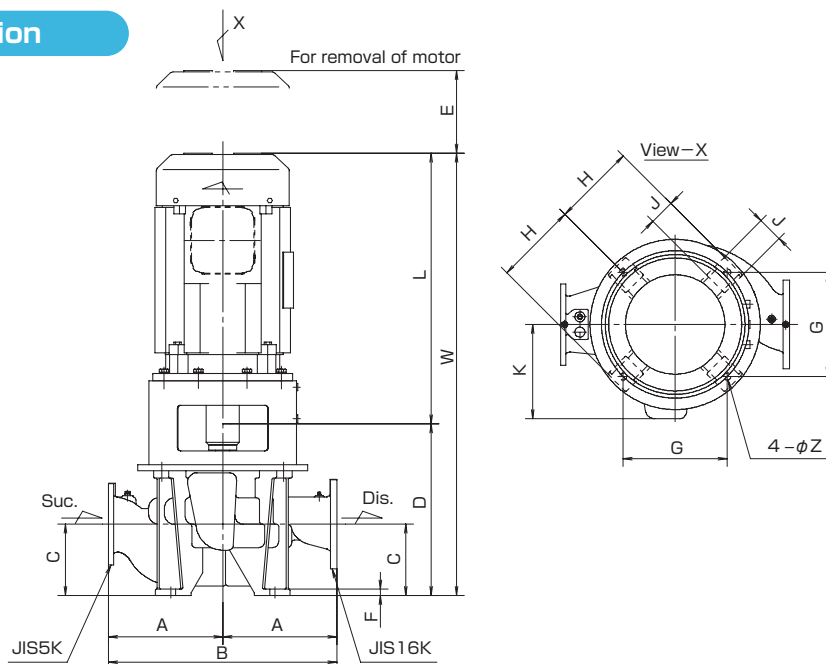
Part No.	Name	Req. No.	Sea Water		Fresh Water	
			Material	JIS	Material	JIS
001	CASING	1	BRONZE	CAC402	DUCTILE CAST IRON	FCD400
002	CASING COVER	1	BRONZE	CAC402	DUCTILE CAST IRON	FCD400
003	IMPELLER	1	PHOSPHOR BRONZE	CAC502A	PHOSPHOR BRONZE	CAC502A
004	IMPELLER	1	PHOSPHOR BRONZE	CAC502A	PHOSPHOR BRONZE	CAC502A
013	STAGE	1	BRONZE	CAC402	DUCTILE CAST IRON	FCD400
020	CASING RING	1	BRONZE	CAC402	BRONZE	CAC402
021	CASING RING	1	BRONZE	CAC402	BRONZE	CAC402
050	O-RING	1	RUBBER	NBR	RUBBER	NBR
051	O-RING	1	RUBBER	NBR	RUBBER	NBR
052	O-RING	1	RUBBER	NBR	RUBBER	NBR
101	SHAFT	1	STAINLESS STEEL	SUS304	STAINLESS STEEL	SUS304
103	KEY	1	STAINLESS STEEL	SUS304	STAINLESS STEEL	SUS304
108	SPACER	1	STAINLESS STEEL	SUS304	STAINLESS STEEL	SUS304
120	IMPELLER NUT	2	STAINLESS STEEL	SUS304	STAINLESS STEEL	SUS304

Part No.	Name	Req. No.	Sea Water		Fresh Water	
			Material	JIS	Material	JIS
130	HUB CUP	1	STAINLESS STEEL	SUS304	STAINLESS STEEL	SUS304
131	SCREW	2	STAINLESS STEEL	SUS304	STAINLESS STEEL	SUS304
158	SET SCREW	1	Cr-Mo STEEL	SCM435	Cr-Mo STEEL	SCM435
160	RETAINING RING	1	STAINLESS STEEL	SUS304	STAINLESS STEEL	SUS304
203	CARBON METAL	1	CARBON	—	CARBON	—
210	METAL COVER	1	BRONZE	CAC402	BRONZE	CAC402
301	COUPLING	1	DUCTILE CAST IRON	FCD400	DUCTILE CAST IRON	FCD400
306	FRICTION JOINT	1	—	—	—	—
403	FRAME	1	CAST IRON	FC200	CAST IRON	FC200
520	MECHANICAL SEAL	1	Sic & CARBON	—	Sic & CARBON	—
521	MECHANICAL SEAL COVER	1	BRASS	CAC402	BRASS	CAC402
522	O-RING	1	RUBBER	NBR	RUBBER	NBR
815	COUPLING SETTING TOOL	2	MILD STEEL	SS400	MILD STEEL	SS400

Performance



Dimension



Model No.	Motor		Bore		Dimension(mm)																
	kW	min ⁻¹	Suc.	Dis.	A	B	C	D	E	F	G	H	J	K	L	W	Z				
EMS-150MD	37	1800	150	150	380	760	230	610	300	25	360	290	100	340	800	1410	28				
	45														950	1560					
	55														1050	1660					
	65														950	1625					
EMS-200MD	55	1800	200	200	450	900	280	675	300	25	410	325	100	375	1050	1725	28				
	65														1210	1885					
	75																	1290	1965		
	90																			1470	2145
	110																				
EMC-250MD	132	1800	250	250	500	1000	315	800	300	25	480	380	110	420	1210	2010	33				
	150														1290	2090					
	185														1470	2270					
															1566	2366					