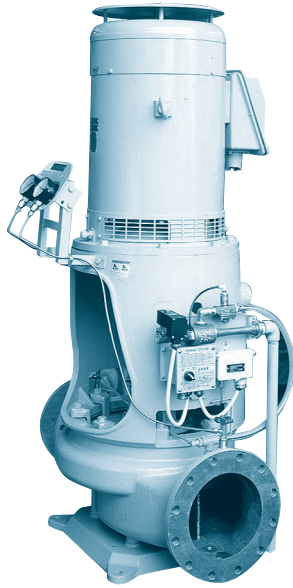




CENTRIFUGAL PUMP ESC-D



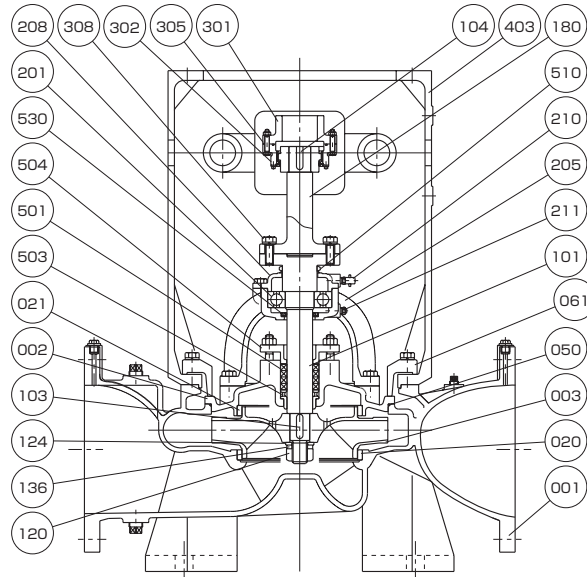
Application

Fire & G.S. Pump
Bilge & Ballast Pump

Feature

Vertical Single-stage Single-suction
Spacer Coupling Type

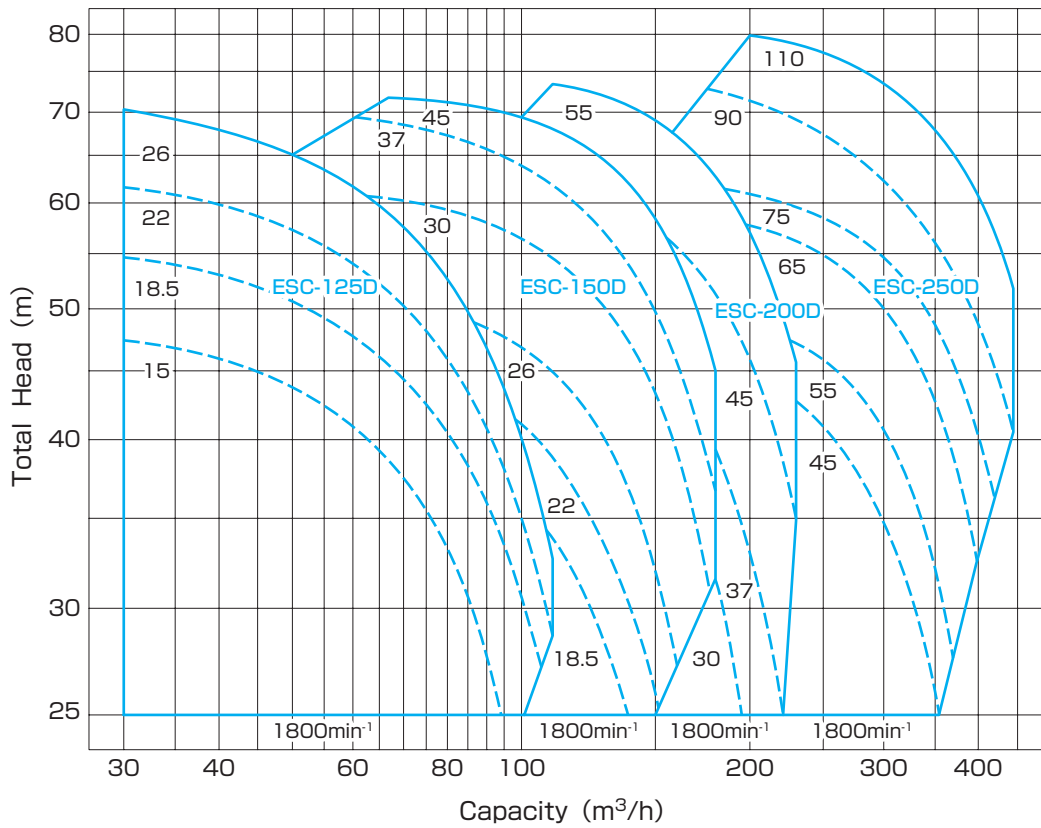
Structure & Material



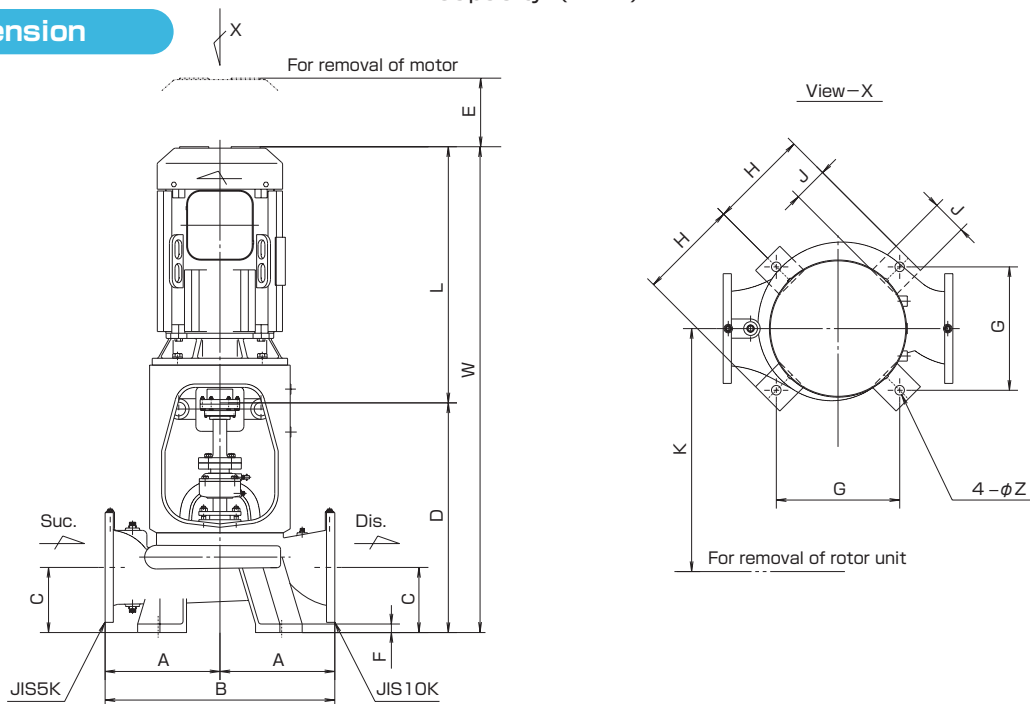
Part No.	Name	Req. No.	Sea Water		Fresh Water	
			Material	JIS	Material	JIS
001	CASING	1	BRONZE	CAC402	CAST IRON	FC200
002	CASING COVER	1	BRONZE	CAC402	CAST IRON	FC200
003	IMPELLER	1	PHOSPHOR BRONZE	CAC502A	PHOSPHOR BRONZE	CAC502A
020	CASING RING	1	BRONZE	CAC402	BRONZE	CAC402
021	CASING RING	1	BRONZE	CAC402	BRONZE	CAC402
050	O-RING	1	RUBBER	NBR	RUBBER	NBR
061	FIXING PLATE	8	DUCTILE CAST IRON	FCD400	DUCTILE CAST IRON	FCD400
101	SHAFT	1	STAINLESS STEEL	SUS304	STAINLESS STEEL	SUS304
103	KEY	1	STAINLESS STEEL	SUS304	STAINLESS STEEL	SUS304
104	KEY	1	CARBON STEEL	S45C	CARBON STEEL	S45C
120	IMPELLER NUT	1	STAINLESS STEEL	SUS304	STAINLESS STEEL	SUS304
124	IMPELLER WASHER	1	STAINLESS STEEL	SUS304	STAINLESS STEEL	SUS304
136	SPRING WASHER	1	STAINLESS STEEL	SUS304	STAINLESS STEEL	SUS304
180	COUPLING SPACER	1	CARBON STEEL	S45C	CARBON STEEL	S45C
201	BALL BEARING	1	BEARING STEEL	SUJ2	BEARING STEEL	SUJ2

Part No.	Name	Req. No.	Sea Water		Fresh Water	
			Material	JIS	Material	JIS
205	BEARING HOUSING	1	CAST IRON	FC200	CAST IRON	FC200
208	BEARING COVER	1	CAST IRON	FC200	CAST IRON	FC200
210	GREASE NIPPLE	1	BRASS	C3602	BRASS	C3602
211	GREASE FITTING	1	BRASS	C3602	BRASS	C3602
301	COUPLING	1	CARBON STEEL	S45C	CARBON STEEL	S45C
302	COUPLING	1	CARBON STEEL	S45C	CARBON STEEL	S45C
305	COUPLING BOLT & NUT	6	Cr-Mo STEEL	SCM435	Cr-Mo STEEL	SCM435
308	BOLT	8	Cr-Mo STEEL	SCM435	Cr-Mo STEEL	SCM435
403	FRAME	1	CAST IRON	FC200	CAST IRON	FC200
501	GLAND PACKING	4	CARBONIZED FIBER	—	CARBONIZED FIBER	—
503	LANTERN RING	1	BRONZE	CAC402	BRONZE	CAC402
504	GLAND	1	BRONZE	CAC402	BRONZE	CAC402
510	V-RING	1	RUBBER	NBR	RUBBER	NBR
530	OIL SEAL	1	RUBBER	NBR	RUBBER	NBR

Performance



Dimension



Model No.	Motor		Bore		Dimension(mm)												
	kW	min ⁻¹	Suc.	Dis.	A	B	C	D	E	F	G	H	J	K	L	W	Z
ESC-125D	15	1800	125	100	345	690	180	727	200	25	360	290	100	800	630	1357	28
	18.5														685	1421	
	22														725	1452	
	26														725	1425	
ESC-150D	18.5	1800	150	125	345	690	180	740	200	25	360	290	100	800	685	1465	28
	22								725						1475		
	26								800						1540		
	30								725						1475		
	37								800						1550		
ESC-200D	30	1800	200	150	365	730	190	750	200	25	360	290	100	800	800	1570	28
	37								800						1550		
	45								950						1700		
	55								800						1631		
ESC-250D	45	1800	250	200	460	920	230	831	250	25	480	380	100	800	950	1781	28
	55								800						1631		
	65								950						1781		
	75								1050						1881		
	90								1210						2041		
	110								1210						2041		