

CENTRIFUGAL PUMP

FHC

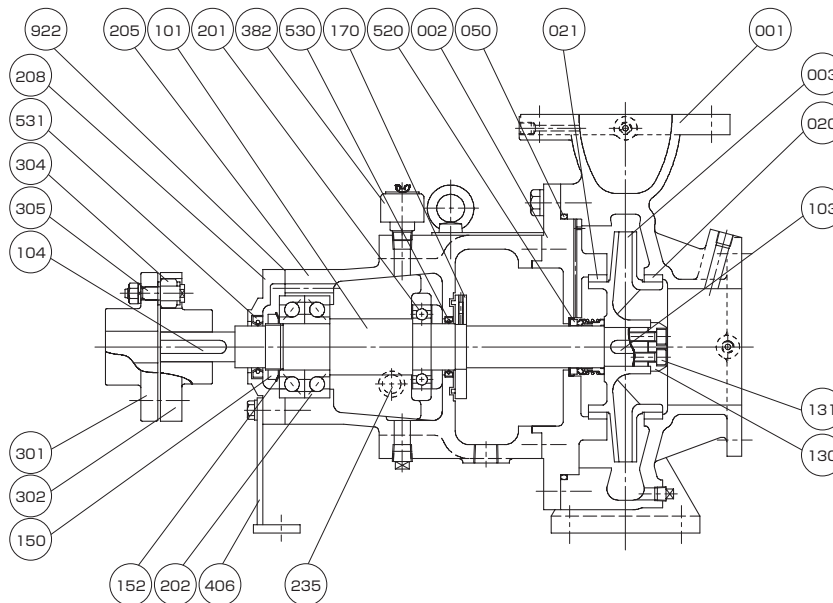
Application

Fire Fighting Pump

Feature

Horizontal Single-stage Single-suction

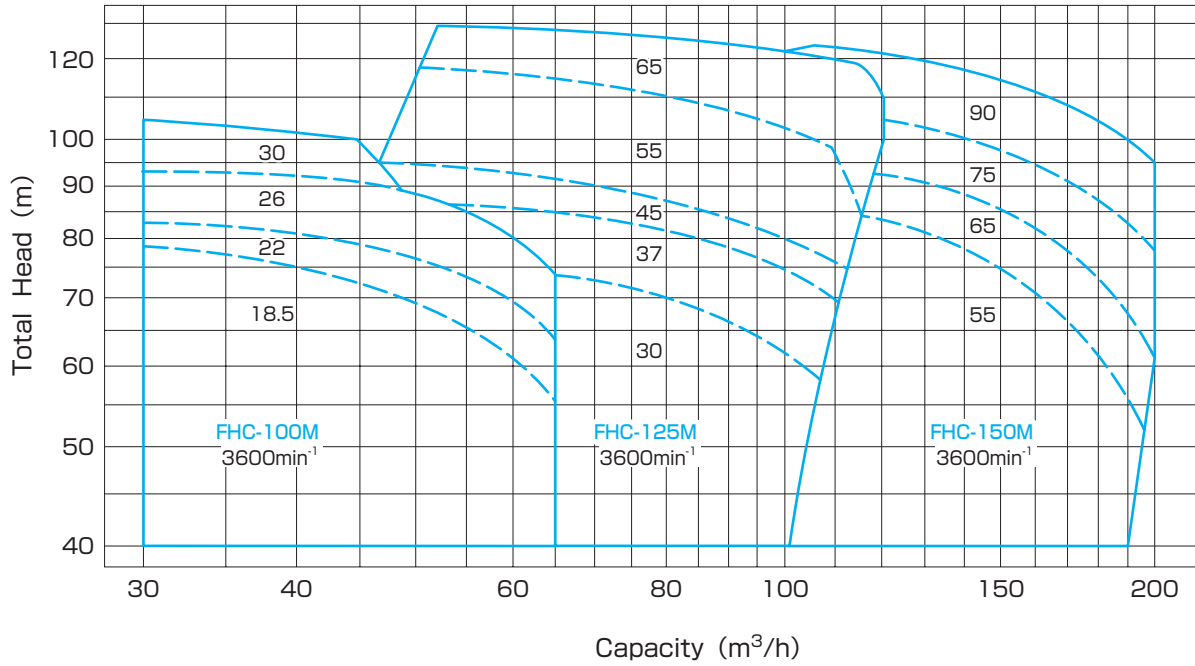
Structure & Material



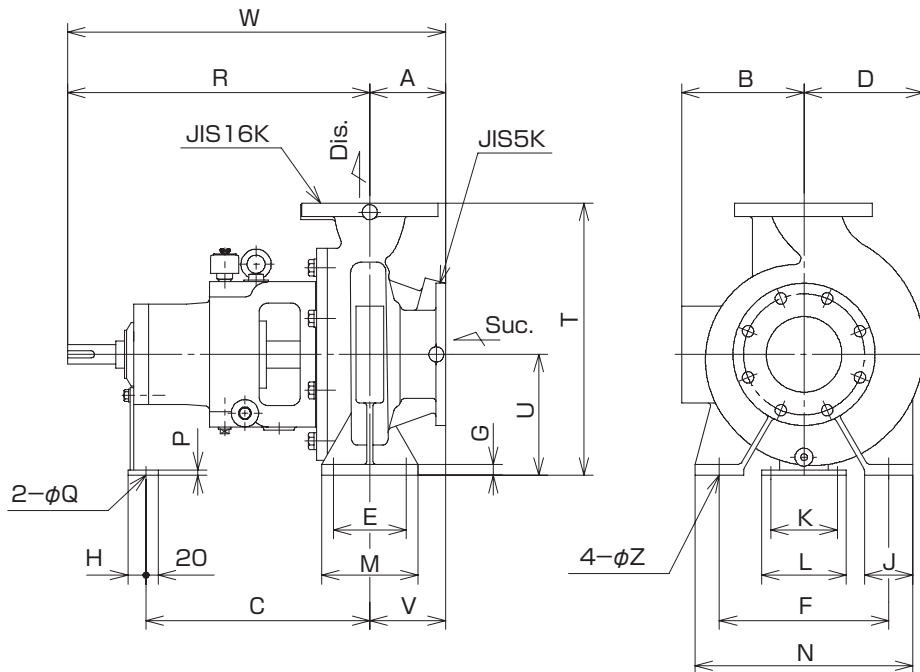
Part No.	Name	Req. No.	Sea Water		Fresh Water	
			Material	JIS	Material	JIS
001	CASING	1	BRONZE	CAC402	DUCTILE CAST IRON	FCD400
002	CASING COVER	1	BRONZE	CAC402	DUCTILE CAST IRON	FCD400
003	IMPELLER	1	PHOSPHOR BRONZE	CAC502A	PHOSPHOR BRONZE	CAC502A
020	CASING RING	1	BRONZE	CAC402	BRONZE	CAC402
021	CASING RING	1	BRONZE	CAC402	BRONZE	CAC402
050	O-RING	1	RUBBER	NBR	RUBBER	NBR
101	SHAFT	1	STAINLESS STEEL	SUS304	STAINLESS STEEL	SUS304
103	KEY	1	STAINLESS STEEL	SUS304	STAINLESS STEEL	SUS304
104	KEY	1	STAINLESS STEEL	S45C	STAINLESS STEEL	S45C
130	HUB CUP	1	STAINLESS STEEL	SUS304	STAINLESS STEEL	SUS304
131	SCREW	2	STAINLESS STEEL	SUS304	STAINLESS STEEL	SUS304
150	BEARING NUT	1	MILD STEEL	SS400	MILD STEEL	SS400
152	BEARING WASHER	1	MILD STEEL	SS400	MILD STEEL	SS400
170	FLINGER	1	STAINLESS STEEL	SUS304	STAINLESS STEEL	SUS304
201	BALL BEARING	1	STAINLESS STEEL	SUJ2	STAINLESS STEEL	SUJ2

Part No.	Name	Req. No.	Sea Water		Fresh Water	
			Material	JIS	Material	JIS
202	BALL BEARING	1	BEARING STEEL	SUJ2	BEARING STEEL	SUJ2
205	BEARING HOUSING	1	CAST IRON	FC200	CAST IRON	FC200
208	BEARING COVER	1	CAST IRON	FC200	CAST IRON	FC200
235	OIL LEVEL GAUGE	1	PLASTIC	—	PLASTIC	—
301	COUPLING	1	CAST IRON	FC200	CAST IRON	FC200
302	COUPLING	1	CAST IRON	FC200	CAST IRON	FC200
304	COUPLING RING	8	BUBBER	NBR	BUBBER	NBR
305	COUPLING BOLT & NUT	8	MILD STEEL	SS400	MILD STEEL	SS400
382	AIR BRETHER	1	MILD STEEL	SS400	MILD STEEL	SS400
406	SUPPORT	1	MILD STEEL	SS400	MILD STEEL	SS400
520	MECHANICAL SEAL	1	Sic & CARBON	—	Sic & CARBON	—
530	OIL SEAL	1	RUBBER	NBR	RUBBER	NBR
531	OIL SEAL	1	RUBBER	NBR	RUBBER	NBR
922	GASKET	1	PAPER	—	PAPER	—

Performance



Dimension



Model No.	Bore		Dimension(mm)																				
	Suc.	Dis.	A	B	C	D	E	F	G	H	J	K	L	M	N	P	G	R	T	U	V	W	Z
FHC-100M	100	80	125	183	370	163	120	280	18	30	80	110	140	160	360	9	15	500	405	180	125	625	19
FHC-125M	125	100	125	203	370	186	120	280	18	30	80	110	140	160	360	9	15	500	450	200	125	625	19
FHC-150M	150	125	140	213	370	225	120	315	18	40	80	110	140	160	400	9	15	530	505	225	140	670	19