

CENTRIFUGAL PUMP

FMC



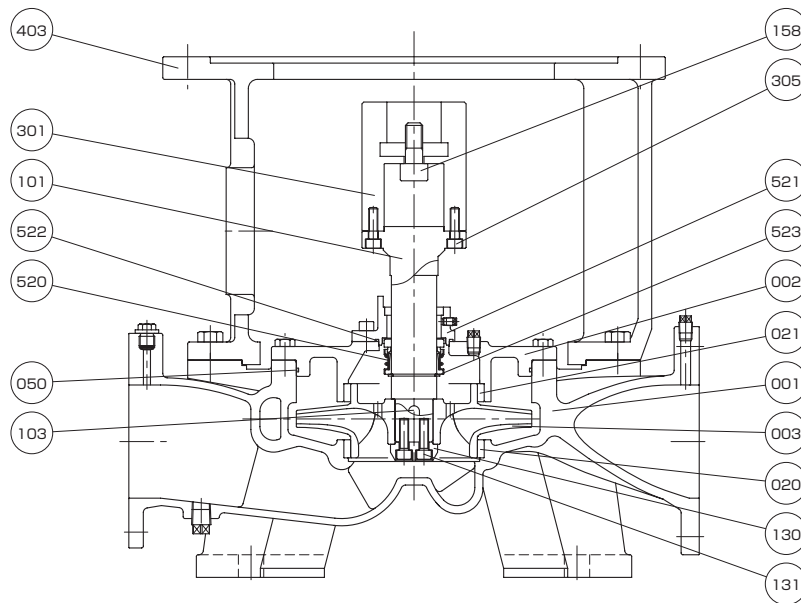
Application

- Fire & G.S. Pump
- Fire & Bilge Ballast Pump
- Emergency Fire Pump
- Tank Cleaning Pump

Feature

- Vertical Single-stage Single-suction
- Closed Coupling Type

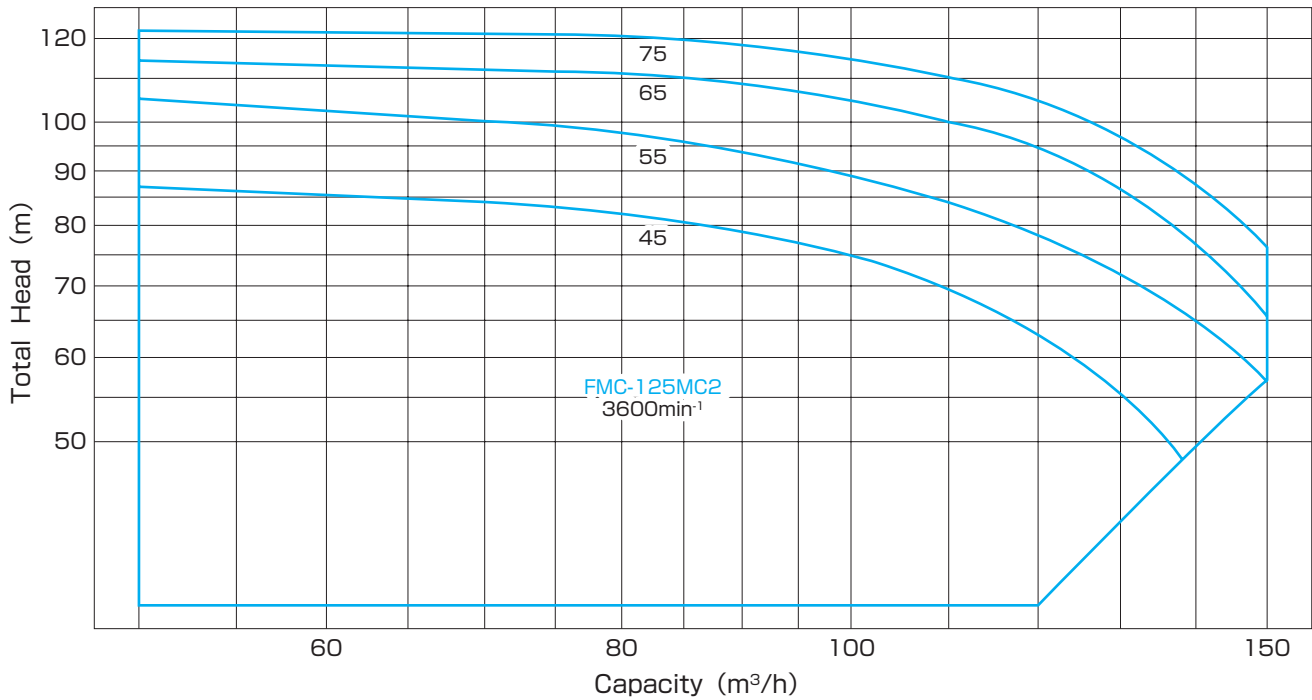
Structure & Material



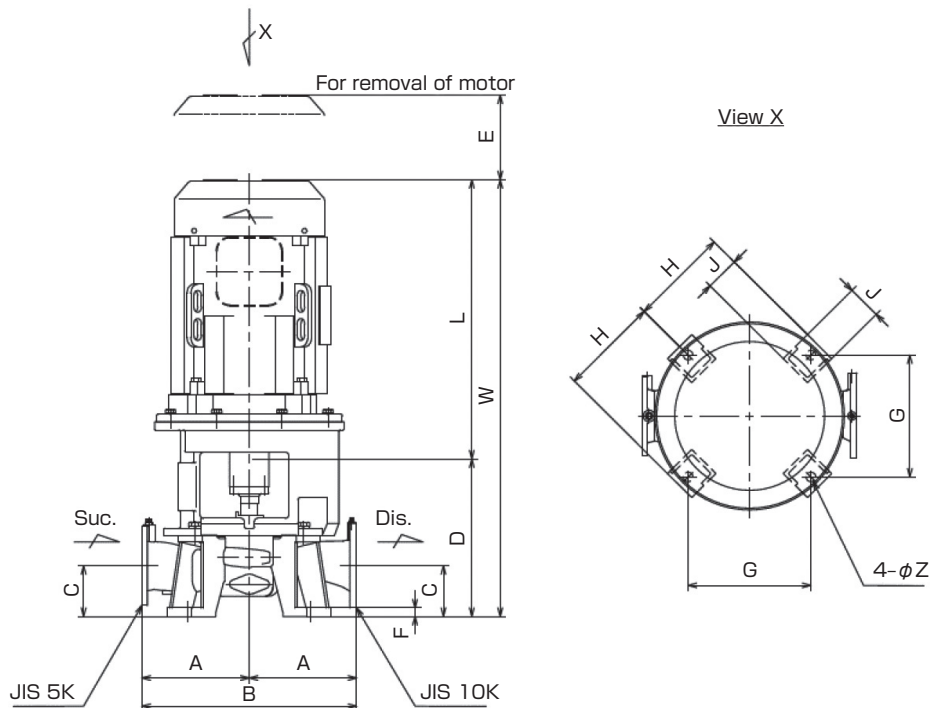
Part No.	Name	Req. No.	Sea Water		Fresh Water	
			Material	JIS	Material	JIS
001	CASING	1	BRONZE	CAC402	DUCTILE CAST IRON	FCD400
002	CASING COVER	1	BRONZE	CAC402	DUCTILE CAST IRON	FCD400
003	IMPELLER	1	PHOSPHOR BRONZE	CAC502A	PHOSPHOR BRONZE	CAC502A
020	CASING RING	1	BRONZE	CAC402	BRONZE	CAC402
021	CASING RING	1	BRONZE	CAC402	BRONZE	CAC402
050	O-RING	1	RUBBER	NBR	RUBBER	NBR
101	SHAFT	1	STAINLESS STEEL	SUS304	STAINLESS STEEL	SUS304
103	KEY	1	STAINLESS STEEL	SUS304	STAINLESS STEEL	SUS304
130	HUB CAP	1	STAINLESS STEEL	SUS304	STAINLESS STEEL	SUS304

Part No.	Name	Req. No.	Sea Water		Fresh Water	
			Material	JIS	Material	JIS
131	SCREW	2	STAINLESS STEEL	SUS304	STAINLESS STEEL	SUS304
158	SET SCREW	1	Cr-Mo STEEL	SCM435	Cr-Mo STEEL	SCM435
301	COUPLING	1	CARBON STEEL	S45C	CARBON STEEL	S45C
305	COUPLING BOLT	8	Cr-Mo STEEL	SCM435	Cr-Mo STEEL	SCM435
403	FRAME	1	CAST IRON	FC200	CAST IRON	FC200
520	MECHANICAL SEAL	1	Sic & CARBON	-	Sic & CARBON	-
521	MECH. SEAL COVER	1	BRONZE	CAC402	BRONZE	CAC402
522	O-RING	1	RUBBER	NBR	RUBBER	NBR
523	RETAINING RING	1	STAINLESS STEEL	SUS304	STAINLESS STEEL	SUS304

Performance



Dimension



Model No.	Motor		Bore		Dimension(mm)												
	kW	min ⁻¹	Suc.	Dis.	A	B	C	D	E	F	G	H	J	L	W	Z	
FMC-125MC2	45	3600	125	125	315	630	150	465	250	25	360	290	100	870	1335	28	
	55													1040	1505		
	65													1090	1555		
	75																