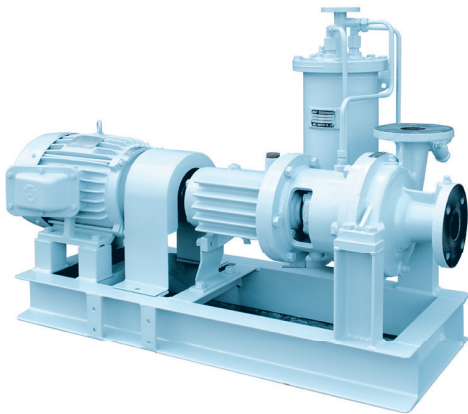


CENTRIFUGAL PUMP HC-MJ



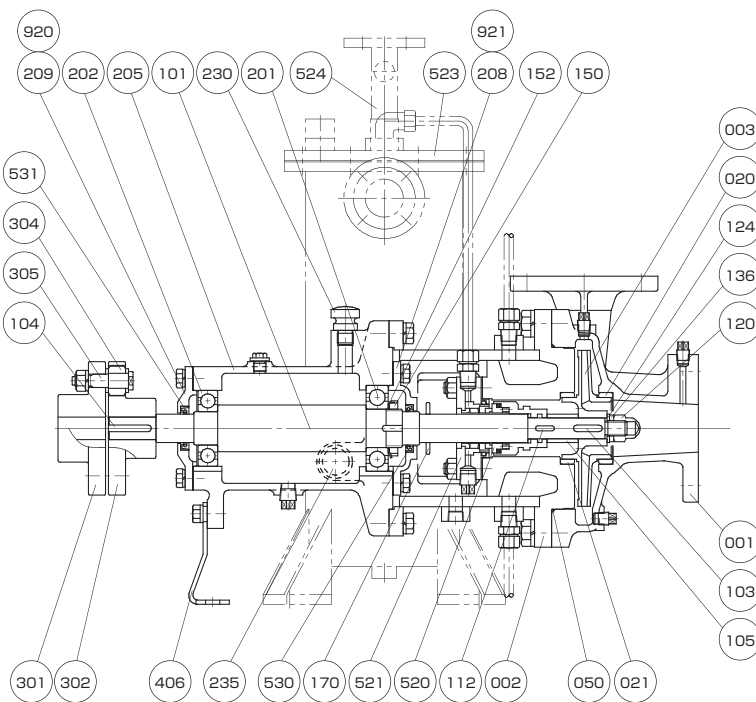
Application

Boiler Water Circulating Pump

Feature

Horizontal Single-stage Single-suction Jacket Type

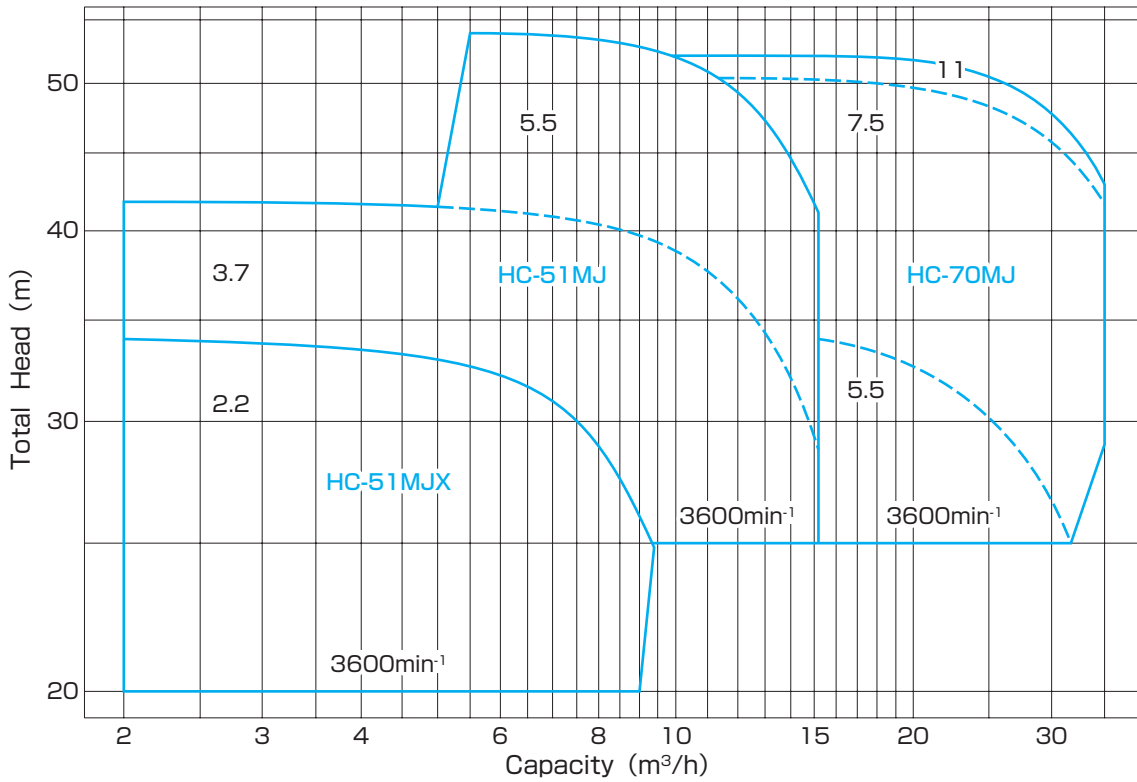
Structure & Material



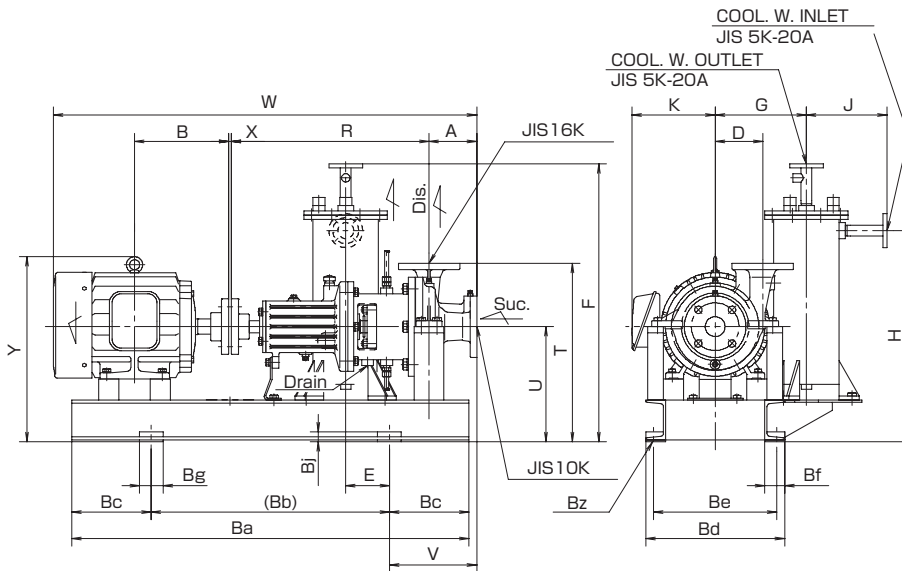
Part No.	Name	Req. No.	Fresh Water	
			Material	JIS
001	CASING	1	DUCTILE CAST IRON	FCD400
002	CASING COVER	1	STPG+SS400	
003	IMPELLER	1	STAINLESS STEEL	SCS13
020	CASING RING	1	CAST IRON	FC200
021	CASING RING	1	CAST IRON	FC200
050	O-RING	1	TEFLON	PTFE
101	SHAFT	1	STAINLESS STEEL	SUS420J2Q
103	KEY	1	STAINLESS STEEL	SUS304
104	KEY	1	CARBON STEEL	S45C
105	SPACER	1	STAINLESS STEEL	SUS304
112	KEY	1	STAINLESS STEEL	SUS304
120	IMPELLER NUT	1	STAINLESS STEEL	SUS304
124	IMPELLER WASHER	1	STAINLESS STEEL	SUS304
136	SPRING WASHER	1	STAINLESS STEEL	SUS304
150	BERING NUT	1	MILD STEEL	SS400
152	BERING WASHER	1	MILD STEEL	SS400
170	FLINGER	1	STAINLESS STEEL	SUS304
201	BALL BEARING	1	BEARING STEEL	SUJ2
202	MALL BEARING	1	BEARING STEEL	SUJ2

Part No.	Name	Req. No.	Fresh Water	
			Material	JIS
205	BEARING HOUSING	1	CAST IRON	FC200
208	BEARING COVER	1	CAST IRON	FC200
209	BEARING COVER	1	CAST IRON	FC200
230	OIL PLUG	1	PLASTIC	—
235	OIL LEVEL GAUGE	1	PLASTIC	—
301	COUPLING	1	CAST IRON	FC200
302	COUPLING	1	CAST IRON	FC200
304	COUPLING RING	8	RUBBER	NBR
305	COUPLING BOLT & NUT	8	MILD STEEL	SS400
406	SUPPORT	1	MILD STEEL	SS400
520	MECHANICAL SEAL	1	SiC & CARBON	—
521	MECHANICAL COVER	1	STAINLESS STEEL	SUS304
523	COOLER	1	SGP+SS400	
524	SHORT PIPE	2	SUS304TP+SS400	
530	OIL SEAL	1	RUBBER	NBR
531	OIL SEAL	1	RUBBER	NBR
920	GASKET	1	PAPER	—
921	GASKET	1	PAPER	—

Performance



Dimension



COOL. F. W.	
QUANTITY	25 ~ 30 ℓ /min
PRESSURE	MAX5kgf/cm ² (0.49MPa)
INLET W. TEMP	MAX 80°C

Model No.	Motor		Bore		Dimension(mm)																								
	kW	min ⁻¹	Suc.	Dis.	A	B	D	E	F	G	H	J	K	R	T	U	V	W	X	Y	Ba	Bb	Bc	Bd	Be	Bf	Bg	Bj	Bz
HC-51MJ	3.7	3600	50	50	120	200	120	135	700	230	532	203	212	500	450	290	195	1021	3	436	900	550	175	350	310	50	60	25	4-φ19
	5.5					239		110					220				1077	448		1000	600	200							
HC-51MJX	2.2	3600	50	50	120	168.5	120	135	700	230	532	203	188	500	450	290	195	954	3	385	900	550	175	350	310	50	60	25	4-φ19
	5.5					239		110					220				1077	448		1000	600	200							
HC-70MJ	5.5	3600	65	65	120	239	140	110	700	265	532	203	245	500	490	290	220	1077	3	448	1000	600	200	430	390	50	60	25	4-φ19
	7.5					323		135					185				1231	520		1100	400	150							
	11					323		135					185				1231	520		1100	400	150							