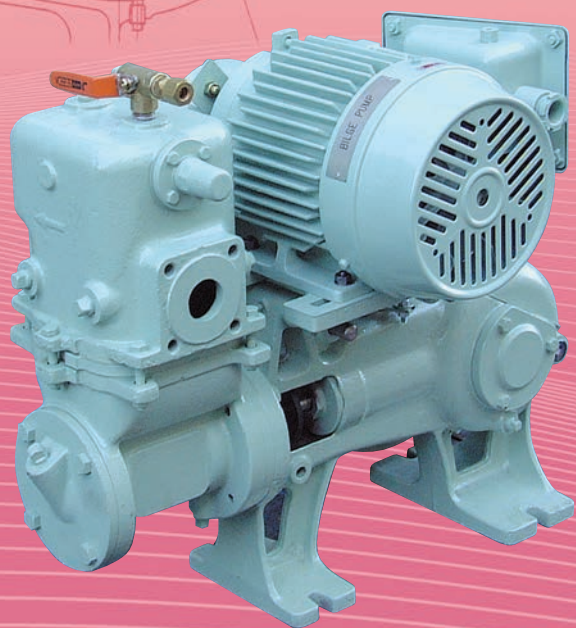
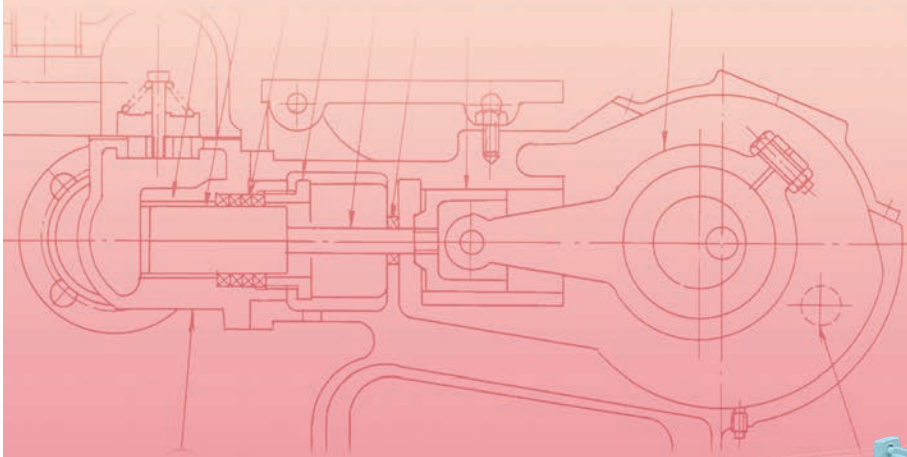




# PISTON PUMP

PD  
LD

# PISTON PUMP



大晃機械工業株式会社  
TAIKO KIKAI INDUSTRIES CO., LTD.



## 特長

自吸引能力が強く呼水の必要がありません。

使用部品点数が少なく構造が簡単で、取り扱い、保守点検が容易です。

## Feature

Strong "Self-Priming", no need for initial feed of water or liquid.

Minimum number of parts to facilitate maintenance and for reduced parts stock.

## 用途

ビルジポンプ  
油水分離器用ポンプ

## Application

Bilge pumps  
Oily water separator pumps

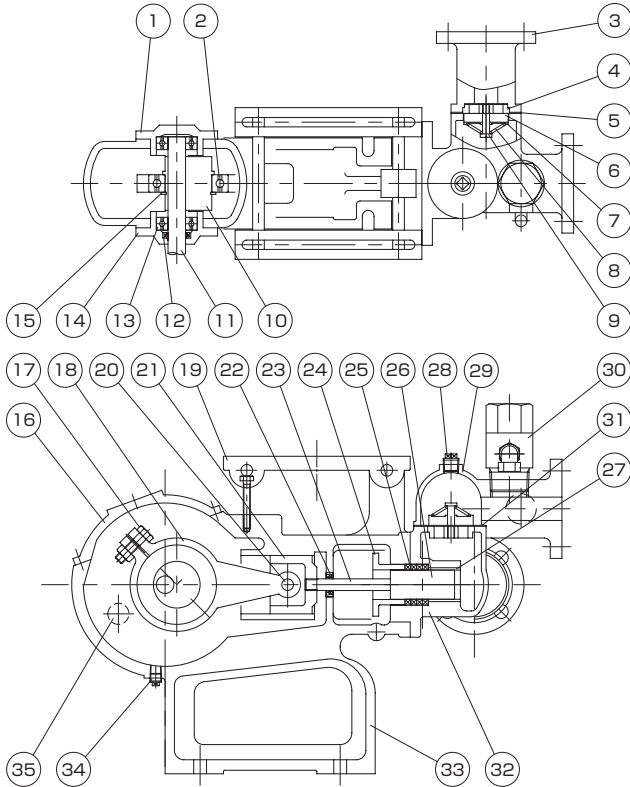
## 仕様

## Specification

形式 Model No.	容量 Capacity (m <sup>3</sup> /h)	揚程 Head (MPa)	口径 Bore Suc.×Dis. (mm)	シリンダ径×ストローク Dia. of Cylinder × Length of stroke (mm)	ストローク数 No. of Stroke (min <sup>-1</sup> )	モータ出力 Motor Output (kW×P)
PD-03NS	0.25	0.20	20×20	30× 21	295	0.4×4
LD-05NSA	0.5	0.20	20×20	32× 21	290	0.4×4
LD-1NSA	1	0.20	25×25	45× 21	290	0.4×4
LD-2NX	2	0.29	32×32	56× 35	240	0.75×6
LD-3NS	3	0.29	32×32	92× 75	56	0.75×4
LD-5NS	5	0.29	50×50	102×102	59	1.5×4

## 構造及び材質

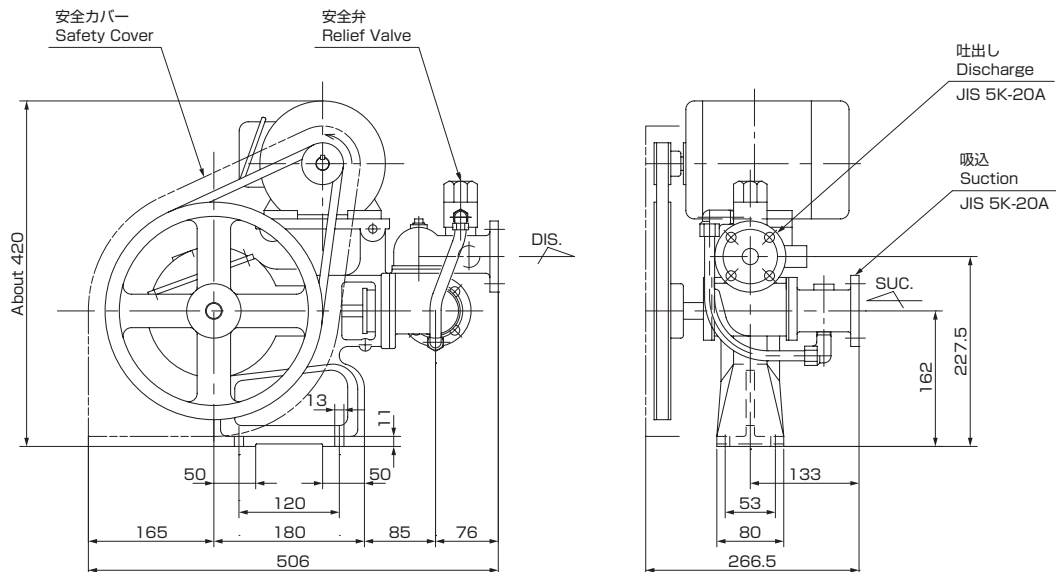
## Structure&Material



NO.	NAME	MATERIAL		Q'TY
		SYMBOL	NAME OF MATERIAL	
1	BEARING HOLDER	FC200	CAST IRON	1
2	BALL BEARING	SUJ2	BEARING STEEL	1
3	SUCTION FLANGE	FC200	CAST IRON	1
4	VALVE SEAT	CAC408	BRONZE CASTING	2
5	PACKING	NBR	RUBBER	1
6	VALVE	NBR	RUBBER	2
7	SPRING SEAT	C3604	BRASS	2
8	SPRING	C5191W	BRASS WIRE	2
9	VALVE GUIDE	C3604	BRASS	2
10	CRANK	FC200	CAST IRON	1
11	SHAFT	S45C	CARBON STEEL	1
12	OIL SEAL	NBR	RUBBER	1
13	BALL BEARING	SUJ2	BEARING STEEL	2
14	OIL SEAL HOLDER	FC200	CAST IRON	1
15	SNAP RING	SWRH	HARD STEEL WIRE	1
16	CRANK CHAMBER COVER	FC200	CAST IRON	1
17	BOLT & NUT	SS400	MILD STEEL	1
18	CONNECTING ROD	FC200	CAST IRON	1
19	MOTOR BASE	FC200	CAST IRON	1
20	CROSSHEAD PIN	SGD3	ROLLED CARBON STEEL	1
21	CROSSHEAD	FC200	CAST IRON	1
22	OIL SEAL	NBR	RUBBER	1
23	PISTON ROD	SUS304	STAINLESS STEEL	1
24	GLAND	C3604	BRASS	1
25	GLAND PACKING	-	ARAMID FIBER	4
26	PISTON	SUS403	STAINLESS STEEL	1
27	CYLINDER LINER	CAC408	BRONZE CASTING	1
28	PLUG	FCMB	CAST IRON	1
29	CHAMBER	FC200	CAST IRON	1
30	RELIEF VALVE	CAC406	BRONZE CASTING	1
31	PACKING	NBR	RUBBER	1
32	CYLINDER BARREL	FC200	CAST IRON	1
33	CRANK CHAMBER	FC200	CAST IRON	1
34	DRAIN PLUG	FCMB	CAST IRON	1
35	OIL LEVEL GAUGE	-	PLASTIC	1

## 寸法

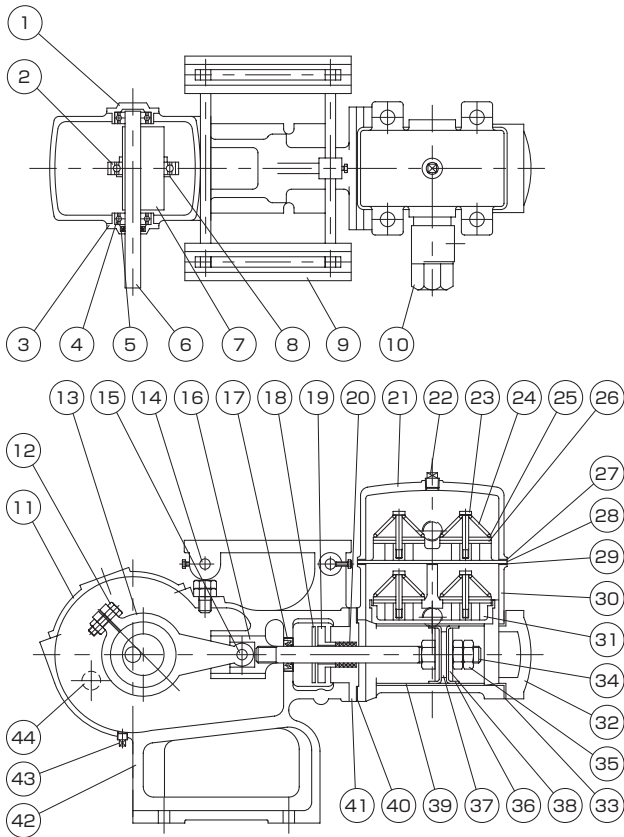
## Dimension



ポンプ質量 | 19kg  
Pump weight | 19kg

## 構造及び材質

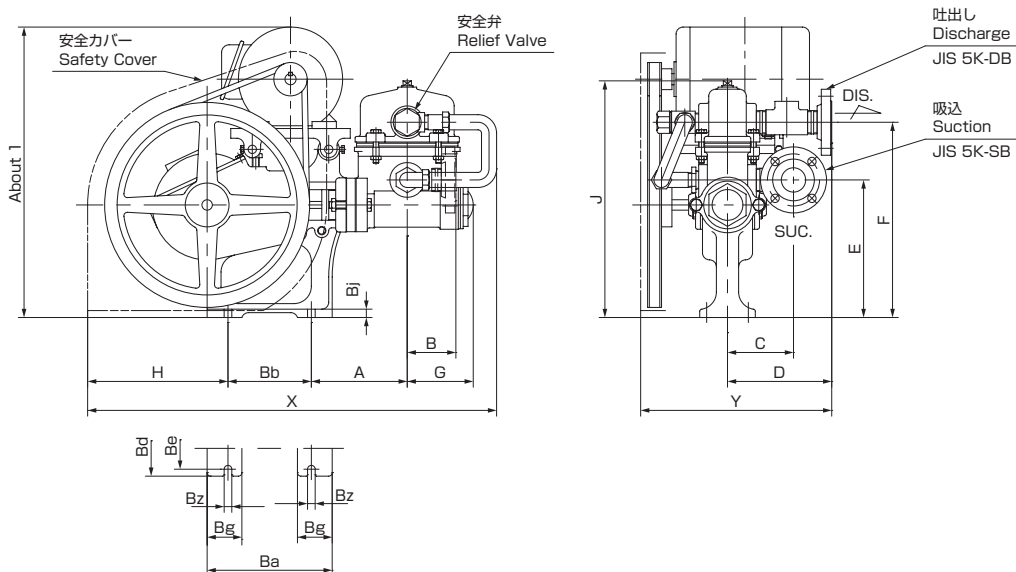
## Structure&Material



NO.	NAME	MATERIAL		Q'TY
		SYMBOL	NAME OF MATERIAL	
1	BEARING HOLDER	FC200	CAST IRON	1
2	BALL BEARING	SUJ2	BEARING STEEL	1
3	OIL SEAL HOLDER	FC200	CAST IRON	1
4	BALL BEARING	SUJ2	BEARING STEEL	2
5	OIL SEAL	NBR	RUBBER	1
6	SHAFT	S45C	CARBON STEEL	1
7	CRANK	FC200	CAST IRON	1
8	SNAP RING	SWRH	HARD STEEL WIRE	1
9	MOTOR BASE	FC200	CAST IRON	1
10	RELIEF VALVE	CAC406	BRONZE CASTING	1
11	CRANK CHAMBER COVER	FC200	CAST IRON	1
12	BOLT & NUT	SS400	MILD STEEL	1
13	CONNECTING ROD	FC200	CAST IRON	1
14	MOTOR BASE PIN	SGD3	ROLLED CARBON STEEL	2
15	CROSSHEAD PIN	SGD3	ROLLED CARBON STEEL	1
16	CROSSHEAD	FC200	CAST IRON	1
17	OIL SEAL	NBR	RUBBER	1
18	DRAIN BOARD	NBR	RUBBER	1
19	GLAND	C3604	BRASS	1
20	GLAND PACKING	-	GREASE COTTON	5
21	CHAMBER	FC200	CAST IRON	1
22	PLUG	FCMB	CAST IRON	1
23	VALVE GUIDE	C3604	BRASS	4
24	SPRING	C5191W	BRASS WIRE	4
25	SPRING SEAT	C3604	BRASS	4
26	VALVE	NBR	RUBBER	4
27	PACKING	NBR	RUBBER	1
28	VALVE SEAT	CAC408	BRONZE CASTING	1
29	PACKING	NBR	RUBBER	1
30	CYLINDER BARREL	FC200	CAST IRON	1
31	VALVE SEAT	CAC408	BRONZE CASTING	2
32	CYLINDER COVER	FC200	CAST IRON	1
33	PACKING	NBR	RUBBER	1
34	PISTON ROD	SUS304	STAINLESS STEEL	1
35	NUT	C3604	BRASS	3
36	LEATHER BOWL	-	LEATHER	2
37	WASHER	C3604	BRASS	1
38	LEATHER BOWL WASHER	C3604	BRASS	2
39	CYLINDER LINER	C2700T	BRASS	1
40	PACKING	-	PAPER	1
41	STUFFING BOX	FC200	CAST IRON	1
42	CRANK CHAMBER	FC200	CAST IRON	1
43	DRAIN PLUG	FCMB	CAST IRON	1
44	OIL LEVEL GAUGE	-	PLASTIC	1

## 寸法

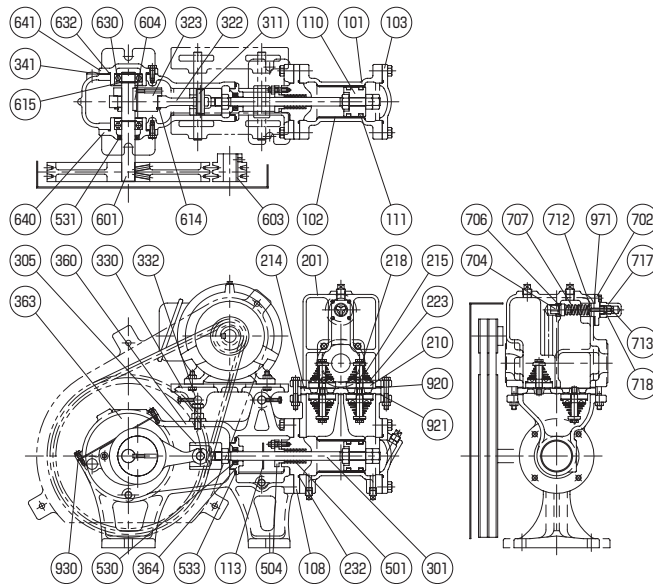
## Dimension



形式 Model No.	口径 Bore		寸法 Dimension (mm)																	ポンプ質量 (kg) Pump Weight		
	SB	DB	A	B	C	D	E	F	G	H	I	J	X	Y	Ba	Bb	Bd	Be	Bg		Bj	Bz
LD-05NSA	20	20	137	71	92	155.5	200	285.5	94	195	420	348	546	289	180	120	80	53	50	11	13	31
LD-1NSA	25	25	137	80	100.5	165	200	285.5	94	195	420	348	546	298.5	180	120	80	53	50	11	13	31

## 構造及び材質

## Structure&Material

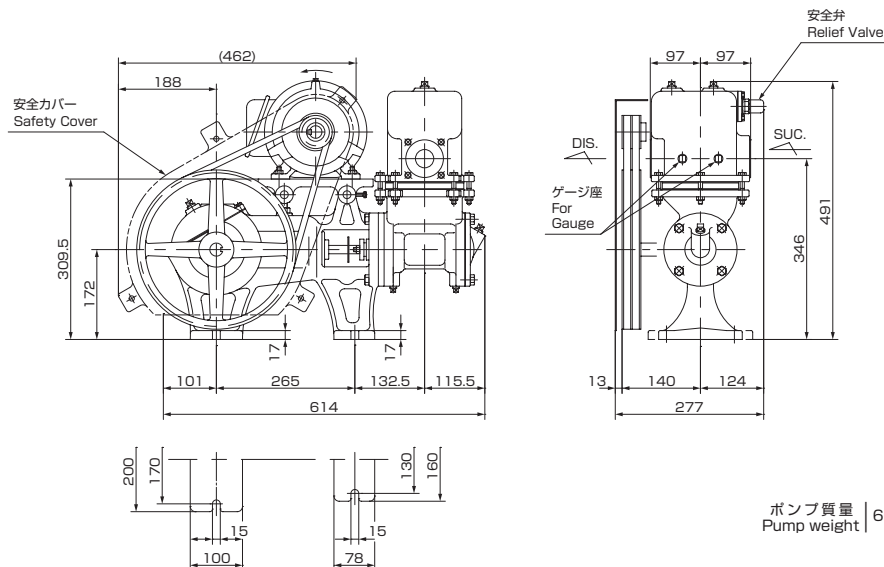


NO.	NAME	MATERIAL		Q'TY
		SYMBOL	NAME OF MATERIAL	
101	CYLINDER	FC200	CAST IRON	1
102	CYLINDER LINER	C2700	BRASS	1
103	CYLINDER COVER	FC200	CAST IRON	1
108	STUFFING BOX	FC200	CAST IRON	1
110	BUCKET	C3604	BRASS	1
111	BUCKET RING	PTFE	TEFLON	2
113	FLINGER	NBR	RUBBER	1
201	CHAMBER	FC200	CAST IRON	1
210	VALVE	NBR	RUBBER	4
214	VALVE SEAT	CAC408	BRONZE CASTING	1
215	SPRING	C5191W	BRASS WIRE	4
218	VALVE GUIDE	C3604	BRASS	4
223	SPRING SEAT	C3604	BRASS	4
232	O-RING	NBR	RUBBER	2
301	PISTON ROD	SUS304	STAINLESS STEEL	1
305	CROSSHEAD	FC200	CAST IRON	1
311	CROSSHEAD PIN	SGD3	ROLLED CARBON STEEL	1
322	CONNECTING ROD	FC200	CAST IRON	1
323	CRANK	S45C	CARBON STEEL	1
330	MOTOR BASE	FC200	CAST IRON	2
332	MOTOR BASE PIN	SGD3	ROLLED CARBON STEEL	2
341	OIL LEVEL GAUGE	-	PLASTIC	1
360	CRANK CASE	FC200	CAST IRON	1
363	CRANK CASE COVER	FC200	CAST IRON	1
364	CROSSHEAD COVER	FC200	CAST IRON	1
501	GLAND PACKING	-	GREASE COTTON	7

NO.	NAME	MATERIAL		Q'TY
		SYMBOL	NAME OF MATERIAL	
504	GLAND	CAC408	BRONZE CASTING	1
530	OIL SEAL	NBR	RUBBER	1
531	OIL SEAL	NBR	RUBBER	1
533	O-RING	NBR	RUBBER	1
601	SHAFT	SKDR	ALLOY TOOL STEEL	1
603	KEY	S45C	CARBON STEEL	1
604	KEY	S45C	CARBON STEEL	1
614	RETAINING RING	SWRH	HARD STEEL WIRE	1
615	RETAINING RING	SWRH	HARD STEEL WIRE	2
630	BALL BEARING	SUJ2	BEARING STEEL	2
632	O-RING	NBR	RUBBER	2
640	BEARING HOUSING	FC200	CAST IRON	1
641	BEARING HOUSING	FC200	CAST IRON	1
702	RELIEF VALVE COVER	C3604	BRASS	1
704	RELIEF VALVE	C3604	BRASS	1
706	RELIEF VALVE SEAT	C3604	BRASS	1
707	RELIEF VALVE SPRING	SUS304	STAINLESS STEEL	1
712	SPRING CARRIER	C3604	BRASS	1
713	ADJUST SCREW	SUS304	STAINLESS STEEL	1
717	RELIEF VALVE CAP	S45C	CARBON STEEL	1
718	LOCK NUT	SUS304	STAINLESS STEEL	1
920	GASKET	NBR	RUBBER	1
921	GASKET	NBR	RUBBER	1
930	GASKET	NBR	RUBBER	1
971	GASKET	-	PAPER	1

## 寸法

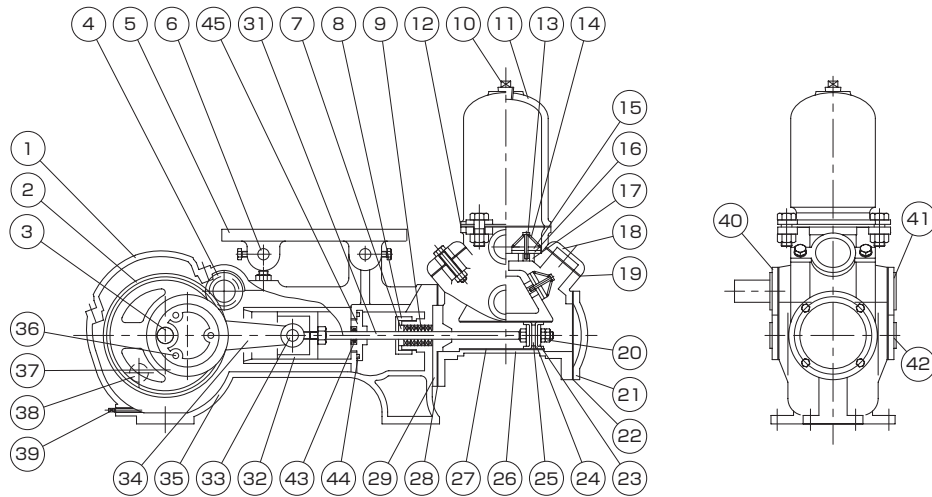
## Dimension



ポンプ質量 | 60kg  
Pump weight |

## 構造及び材質

## Structure&Material

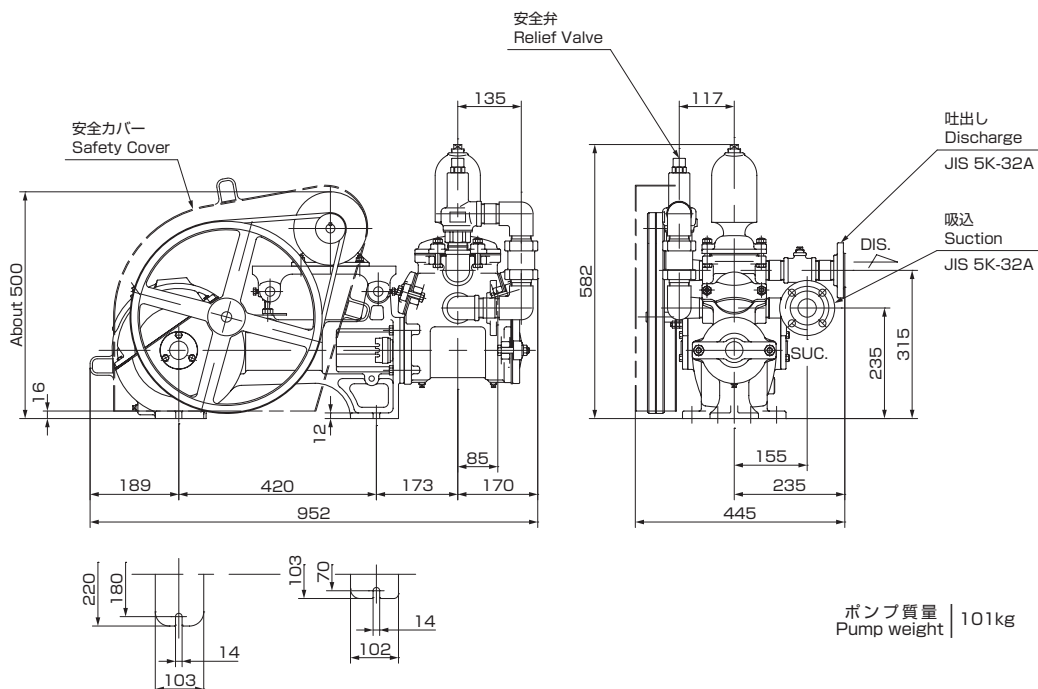


NO.	NAME	MATERIAL		Q'TY
		SYMBOL	NAME OF MATERIAL	
1	CRANK CHAMBER COVER	FC200	CAST IRON	1
2	MAIN GEAR	FC200	CAST IRON	1
3	MAIN GEAR SHAFT	SGD290	CARBON STEEL	1
4	PINION GEAR	S45C	CARBON STEEL	1
5	MOTOR BASE	FC200	CAST IRON	2
6	MOTOR BASE PIN	SGD3	ROLLED CARBON STEEL	2
7	COLLAR	C3604	BRASS	1
8	GLAND	C3604	BRASS	1
9	GLAND PACKING	-	GREASE COTTON	8
10	PLUG	FCMB	CAST IRON	1
11	CHAMBER	FC200	CAST IRON	1
12	PACKING	NBR	RUBBER	1
13	VALVE GUIDE	C3604	BRASS	4
14	SPRING	C5191W	BRASS WIRE	4
15	SPRING SEAT	C3604	BRASS	4
16	VALVE	NBR	RUBBER	4
17	VALVE SEAT	CAC406	BRONZE CASTING	4
18	VALVE COVER	FC200	CAST IRON	2
19	PACKING	NBR	RUBBER	2
20	NUT	C3604	BRASS	3
21	CYLINDER COVER	FC200	CAST IRON	1
22	PACKING	NBR	RUBBER	1

NO.	NAME	MATERIAL		Q'TY
		SYMBOL	NAME OF MATERIAL	
23	LEATHER BOWL WASHER	CAC406	BRONZE CASTING	2
24	LEATHER BOWL	-	LEATHER	2
25	WASHER	CAC406	BRONZE CASTING	1
26	CYLINDER BARREL	FC200	CAST IRON	1
27	CYLINDER LINER	C2700T	BRASS	1
28	PACKING	-	PAPER	1
29	STUFFING BOX	FC200	CAST IRON	1
31	PISTON ROD	SUS304	STAINLESS STEEL	1
32	CROSSHEAD	FC200	CAST IRON	1
33	CROSSHEAD PIN	SGD3	ROLLED CARBON STEEL	1
34	CONNECTING ROD	FC200	CAST IRON	1
35	CRANK CHAMBER	FC200	CAST IRON	1
36	BOLT	SS400	MILD STEEL	3
37	CONNECTING ROD PLATE	SS400	MILD STEEL	1
38	OIL LEVEL GAUGE	-	PLASTIC	1
39	DRAIN PLUG	FCMB	CAST IRON	1
40	PINION GEAR B. METAL	FC200	CAST IRON	1
41	PINION GEAR B. METAL	FC200	CAST IRON	1
42	MAIN GEAR B. METAL	FC200	CAST IRON	2
43	OIL SEAL	NBR	RUBBER	1
44	O-RING	NBR	RUBBER	1
45	CROSSHEAD COVER	SS400	MILD STEEL	1

## 寸法

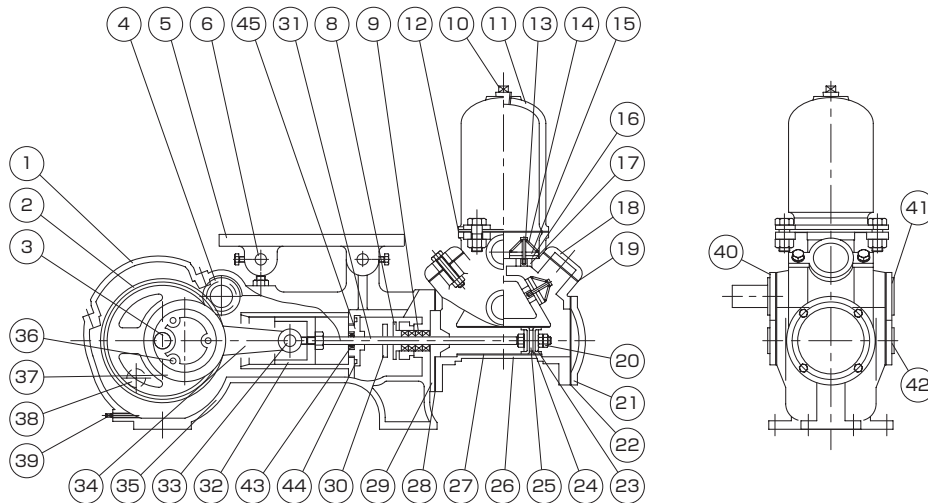
## Dimension



ポンプ質量 | 101kg  
Pump weight | 101kg

## 構造及び材質

## Structure&Material

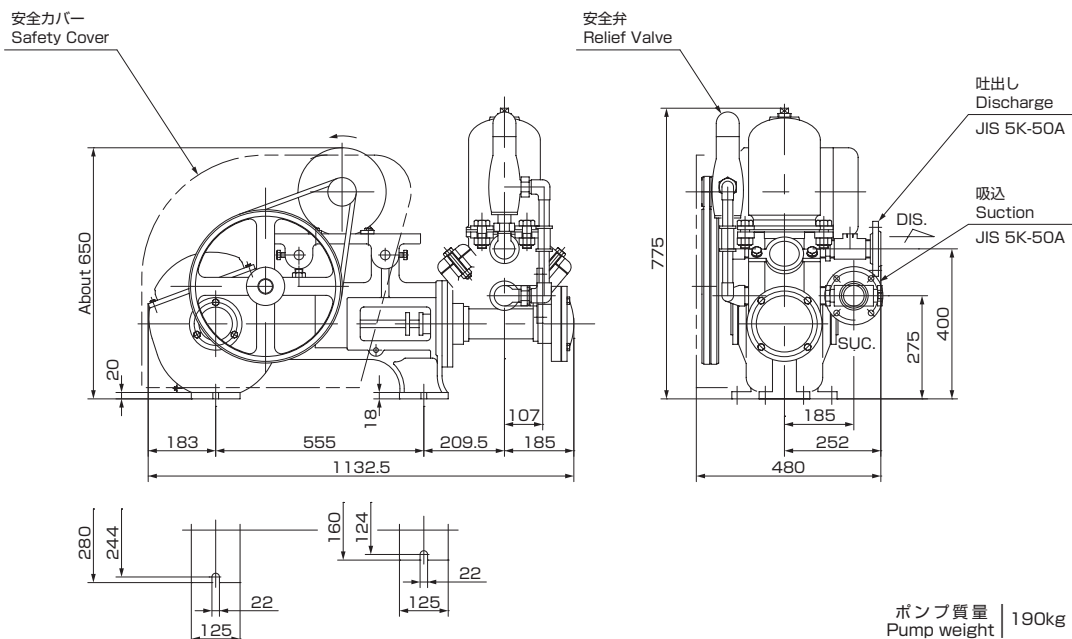


NO.	NAME	MATERIAL		Q'TY
		SYMBOL	NAME OF MATERIAL	
1	CRANK CHAMBER COVER	FC200	CAST IRON	1
2	MAIN GEAR	FC200	CAST IRON	1
3	MAIN GEAR SHAFT	SGD3	ROLLED CARBON STEEL	1
4	PINION GEAR	S45C	CARBON STEEL	1
5	MOTOR BASE	FC200	CAST IRON	2
6	MOTOR BASE PIN	SGD3	ROLLED CARBON STEEL	2
8	GLAND	CAC202	BRASS CASTING	1
9	GLAND PACKING	-	GREASE COTTON	4
10	PLUG	FCMB	CAST IRON	1
11	CHAMBER	FC200	CAST IRON	1
12	PACKING	NBR	RUBBER	1
13	VALVE GUIDE	C3604	BRASS	4
14	SPRING	C5191W	BRASS WIRE	4
15	SPRING SEAT	C3604	BRASS	4
16	VALVE	NBR	RUBBER	4
17	VALVE SEAT	CAC406	BRONZE CASTING	4
18	VALVE COVER	FC200	CAST IRON	2
19	PACKING	NBR	RUBBER	2
20	NUT	C3604	BRASS	3
21	CYLINDER COVER	FC200	CAST IRON	1
22	PACKING	NBR	RUBBER	1
23	LEATHER BOWL WASHER	C3604	BRASS	2

NO.	NAME	MATERIAL		Q'TY
		SYMBOL	NAME OF MATERIAL	
24	LEATHER BOWL	-	LEATHER	2
25	WASHER	C3604	BRASS	1
26	CYLINDER BARREL	FC200	CAST IRON	1
27	CYLINDER LINER	C2700T	BRASS	1
28	PACKING	-	PAPER	1
29	STUFFING BOX	FC200	CAST IRON	1
30	DRAIN BOARD	NBR	RUBBER	1
31	PISTON ROD	SUS304	STAINLESS STEEL	1
32	CROSSHEAD	FC200	CAST IRON	1
33	CROSSHEAD PIN	SGD3	ROLLED CARBON STEEL	1
34	CONNECTING ROD	FC200	CAST IRON	1
35	CRANK CHAMBER	FC200	CAST IRON	1
36	BOLT	SS400	MILD STEEL	3
37	CONNECTING ROD PLATE	SS400	MILD STEEL	1
38	OIL LEVEL GAUGE	-	PLASTIC	1
39	DRAIN PLUG	FCMB	CAST IRON	1
40	PINION GEAR B. METAL	FC200	CAST IRON	1
41	PINION GEAR B. METAL	FC200	CAST IRON	1
42	MAIN GEAR B. METAL	FC200	CAST IRON	2
43	OIL SEAL	NBR	RUBBER	1
44	O-RING	NBR	RUBBER	1
45	CROSSHEAD COVER	FC200	CAST IRON	1

## 寸法

## Dimension



ポンプ質量 | 190kg  
Pump weight | 190kg

# 大晃機械工業株式会社

TAIKO KIKAI INDUSTRIES CO., LTD.

URL <https://www.taiko-kk.com>

- 本社・工場 〒742-1598 山口県熊毛郡田布施町大字下田布施209-1
  - Head Office & Factory 209-1 Shimotabuse, Tabuse-cho, Kumage-gun, Yamaguchi pref. 742-1598 Japan  
TEL: 81-820-52-3113 FAX: 81-820-53-1001 E-mail: business@taiko-kk.com
  - Tokyo Branch 6th floor, ICHIGO KUDAN Building, 2-38 Kandajinbo-cho, Chiyoda-ku, Tokyo 101-0051 Japan  
TEL: 81-3-3221-8551 FAX: 81-3-3221-8555 E-mail: tokyo-br@taiko-kk.com
  - Osaka Branch 8th floor, KC Building, 3-4-7 Kawara-machi, Chuo-ku, Osaka 541-0048 Japan  
TEL: 81-6-6231-6241 FAX: 81-6-6222-3295 E-mail: osaka-br@taiko-kk.com
- Shanghai Office・TAIKO ASIA PACIFIC PTE. LTD.・TAIKO KOREA  
TAIKO VACUUM TECH Co., Ltd. (KOREA)・TAIKO FLOW SOLUTION Co., Ltd. (Taiwan)



- ISO 9001の認証取得 お問い合わせ先の詳細は別紙【BUSINESS OFFICE NETWORK】をご覧ください。
- ISO 9001 certified For any inquiries, please refer to attached 【BUSINESS OFFICE NETWORK】
- このカタログに記載した製品は性能向上のため予告なしに寸法及び仕様を変更することがあります。
- The sizes and specifications of the products in this catalog are subject to improvement.

2020/09 MUTSUMI